

Test Scenarios – SARAS Version 1.0
Revenue Management System

**NSDL e-Governance Infrastructure
Limited, Mumbai**

JULY 16, 2019

Contents

1. User Management:	5
1.1 Add User	5
1.2 Add User Group	6
1.3 Add User Role	6
1.4 Edit User	7
1.5 Add User Group	8
1.6 Edit User Role	8
1.7 Manage User	9
1.8 Manage User Parameters (RMS Admin)	10
1.9 Manage User Parameters (CCA Admin)	11
2. Master Management	12
2.1 Add Record	12
2.2 Edit Record	12
2.3 Delete Record	13
3. Setting up of Licensee:	14
3.1 Registration of Licensee	14
3.2 Manage Licensee Details	15
4. Deduction Claim and Verification:	16
4.1 Quarterly Submission of deduction Claims	16
4.2 Request for Submission of Additional deduction Claims	17
4.3 Verification of Quarterly/Audited deduction Claims	18
4.4 Setting of Threshold amount for deduction verification process	19
4.5 Issuance of Show Cause Notice	20
4.6 View and Respond to Show Cause Notice	21
4.7 Submission of Audited deduction claims	22
4.8 Re-initiation of deduction verification	23
5. License Fee Assessment	24
5.1 Quarterly Statement of Revenue submission	24

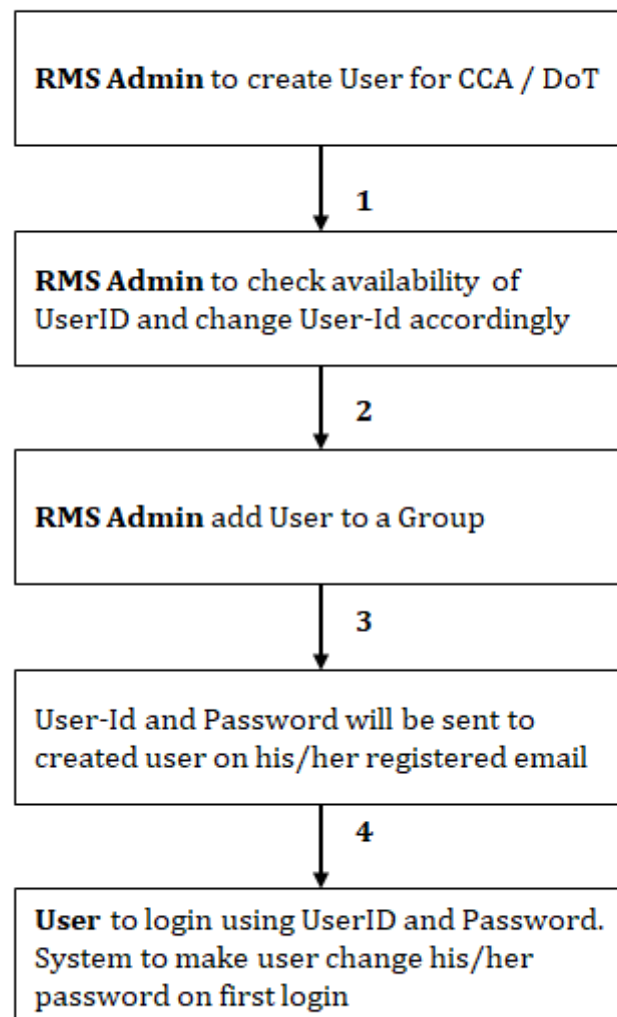
5.2	Audited Statement of Revenue submission.....	25
5.3	Timeline Extension Request.....	26
5.4	Payment of Licensee Fee.....	27
5.5	Verification of Offline Payment.....	28
5.6	Submission of Audited documents by Licensee Admin	29
5.7	Add Backs	30
5.8	Initiate Assessment.....	31
5.9	Approval of Assessment Report	32
5.10	Issuance of Show Cause Notice	33
5.11	Respond to Show Cause Notice	34
6.	Bank Guarantee.....	35
6.1	Add Verify Validate Approve BG.....	35
6.2	BG Review : Validity Check	36
6.3	BG Review : Half Yearly	37
6.4	BG Review : Additional BG	38
6.5	Manage BG.....	39
6.6	Release BG	40
6.7	Invoke BG.....	41
6.8	Link Licensees.....	42
7.	CAF\EMR\LD.....	43
7.1	Add CAF\EMR\LD Notice	43
8.	Grievance :.....	44
8.1	Add Grievance	44
8.2	Grievance Escalation	45
9.	Discussion Board:.....	46
10.	Court Case:.....	47
10.1	Add Court Case	47
10.2	Update Court Case	47
10.3	Link Court Cases.....	48
10.4	Tag Court Cases	49

10.5 Enter Hearing Details.....	50
10.6 Enter Counsellors Payment Details	51
11. Knowledge Bank:	52

1. User Management:

1.1 Add User

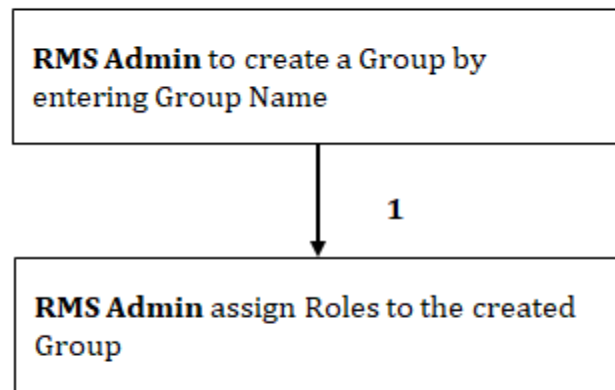
Add User



Scenario-I : 1--2--3--4

1.2 Add User Group

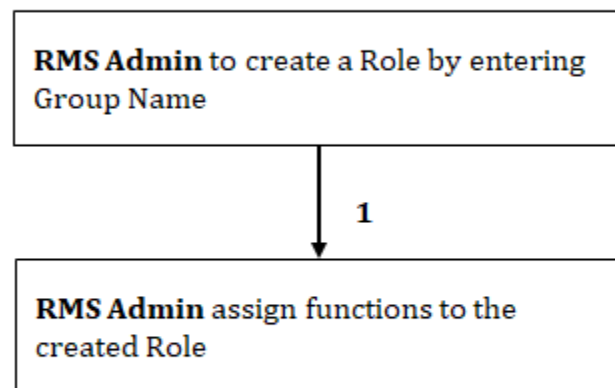
Add Group



Scenario-I : 1

1.3 Add User Role

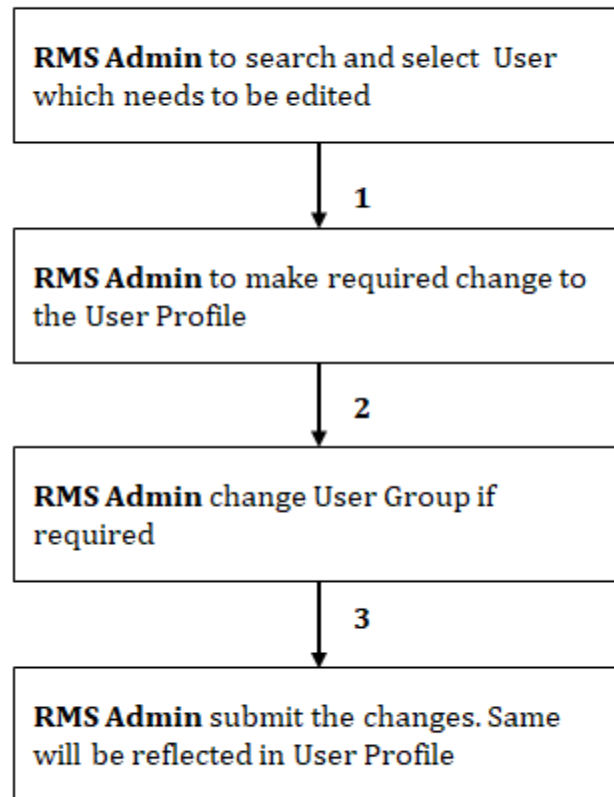
Add Role



Scenario-I : 1

1.4 Edit User

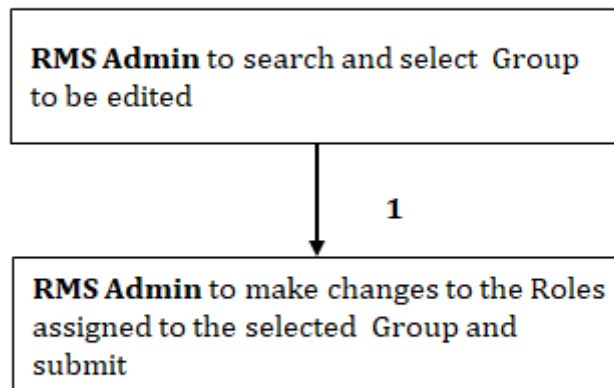
Edit User



Scenario-I : 1--2--3

1.5 Add User Group

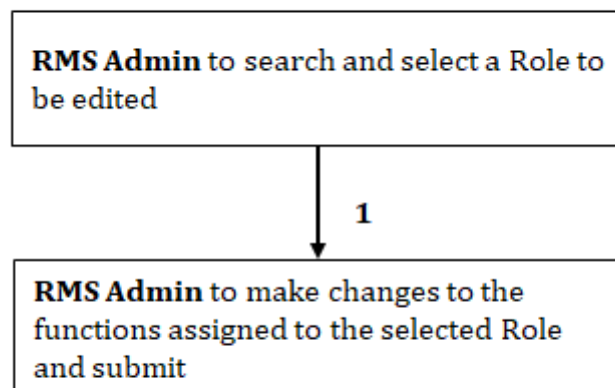
Edit Group



Scenario-I : 1

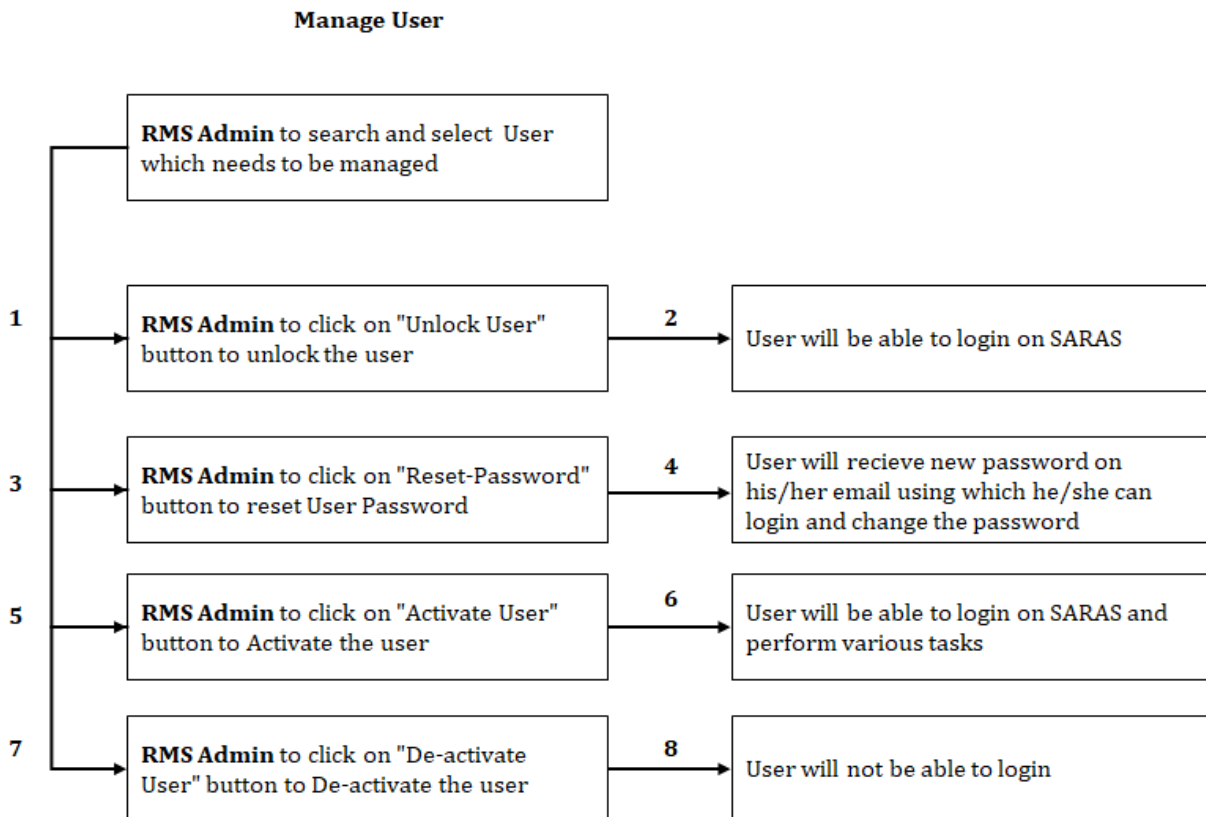
1.6 Edit User Role

Edit Role



Scenario-I : 1

1.7 Manage User



Scenario-I : 1--2

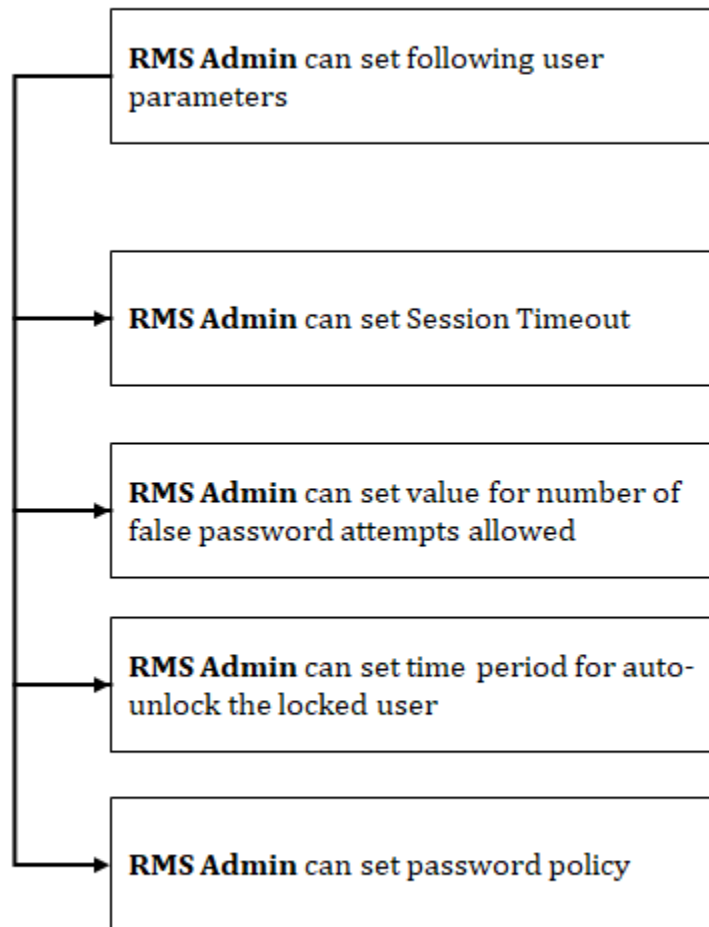
Scenario-II : 3--4

Scenario-III : 5--6

Scenario-IV : 7--8

1.8 Manage User Parameters (RMS Admin)

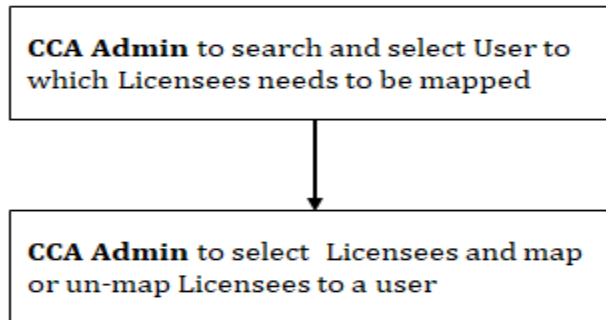
Manage User Parameters



Scenario : Not Applicable

1.9 Manage User Parameters (CCA Admin)

Manage User Parameters

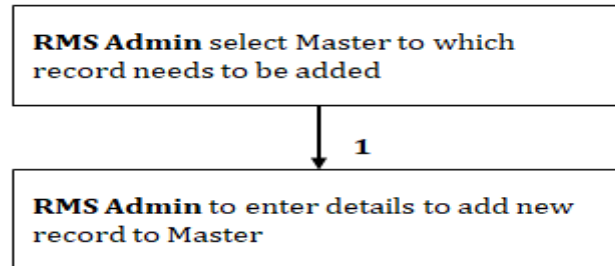


Scenario : Not Applicable

2. Master Management

2.1 Add Record

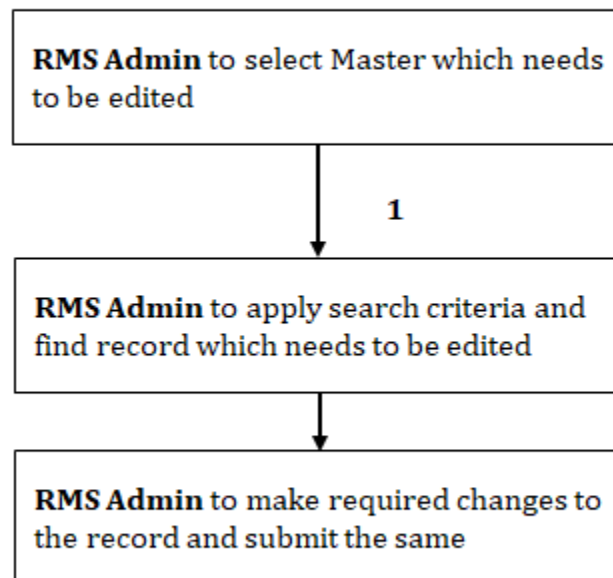
Add Record To a Master



Scenario-I : 1

2.2 Edit Record

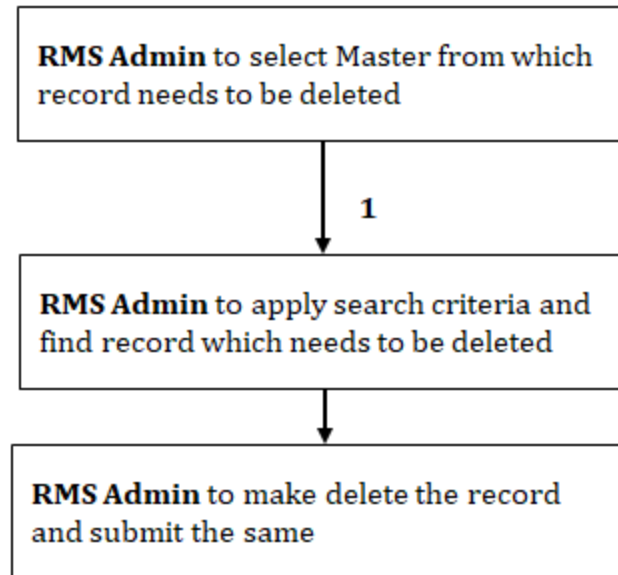
Edit Record In Master



Scenario-I : 1--2

2.3 Delete Record

Delete Record from Master

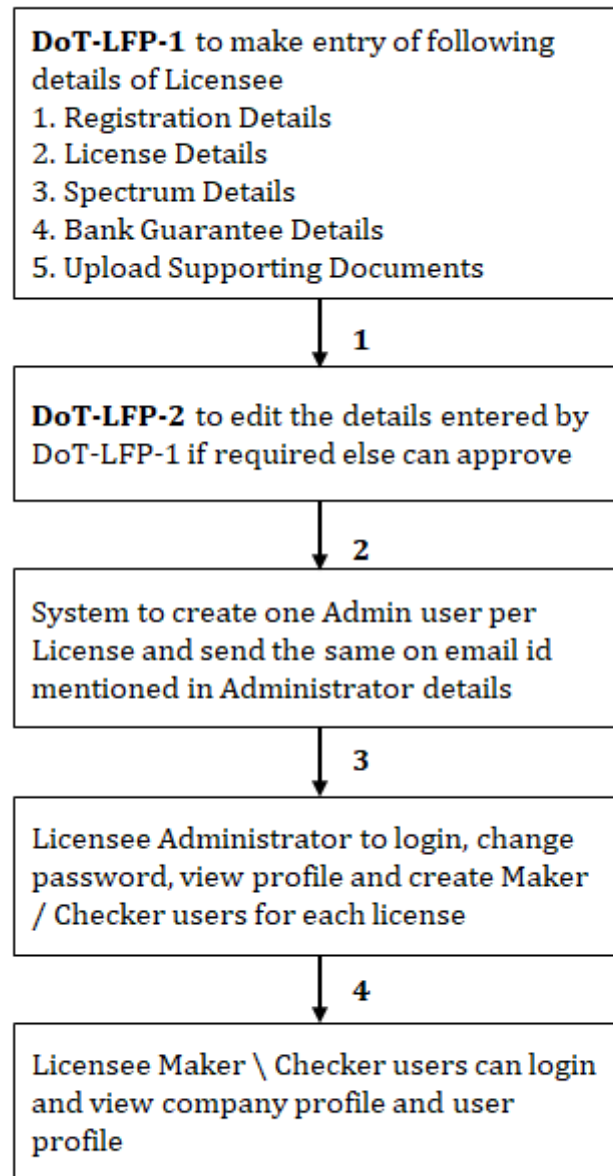


Scenario-I : 1--2

3. Setting up of Licensee:

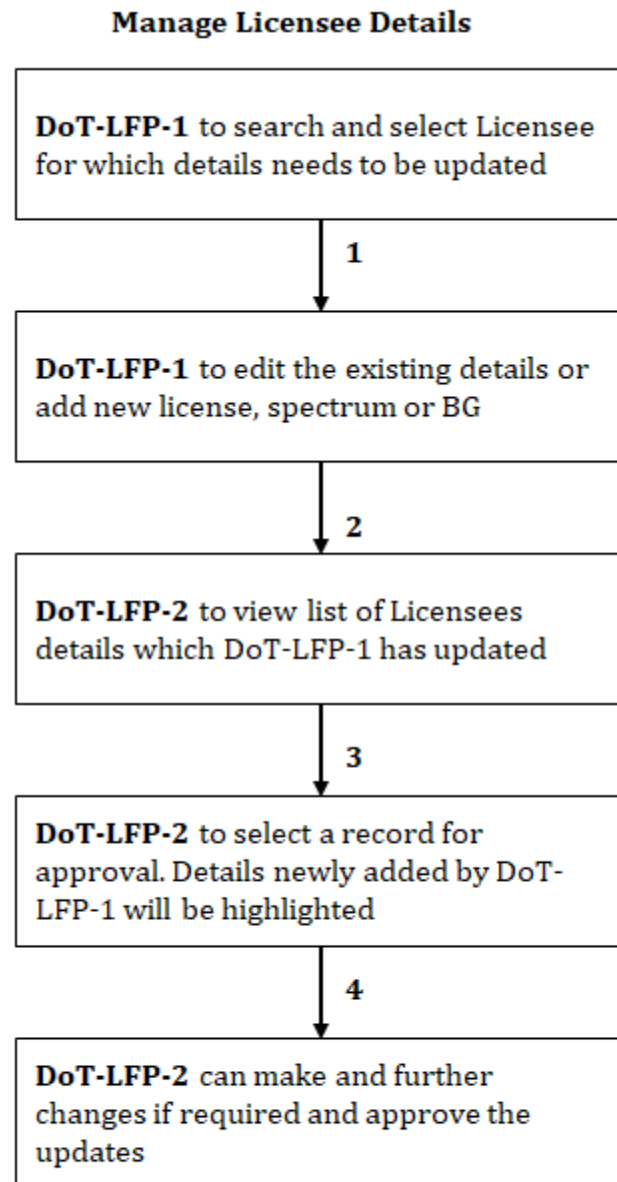
3.1 Registration of Licensee

Setting-up of Licensee



Scenario-I : 1--2--3--4

3.2 Manage Licensee Details

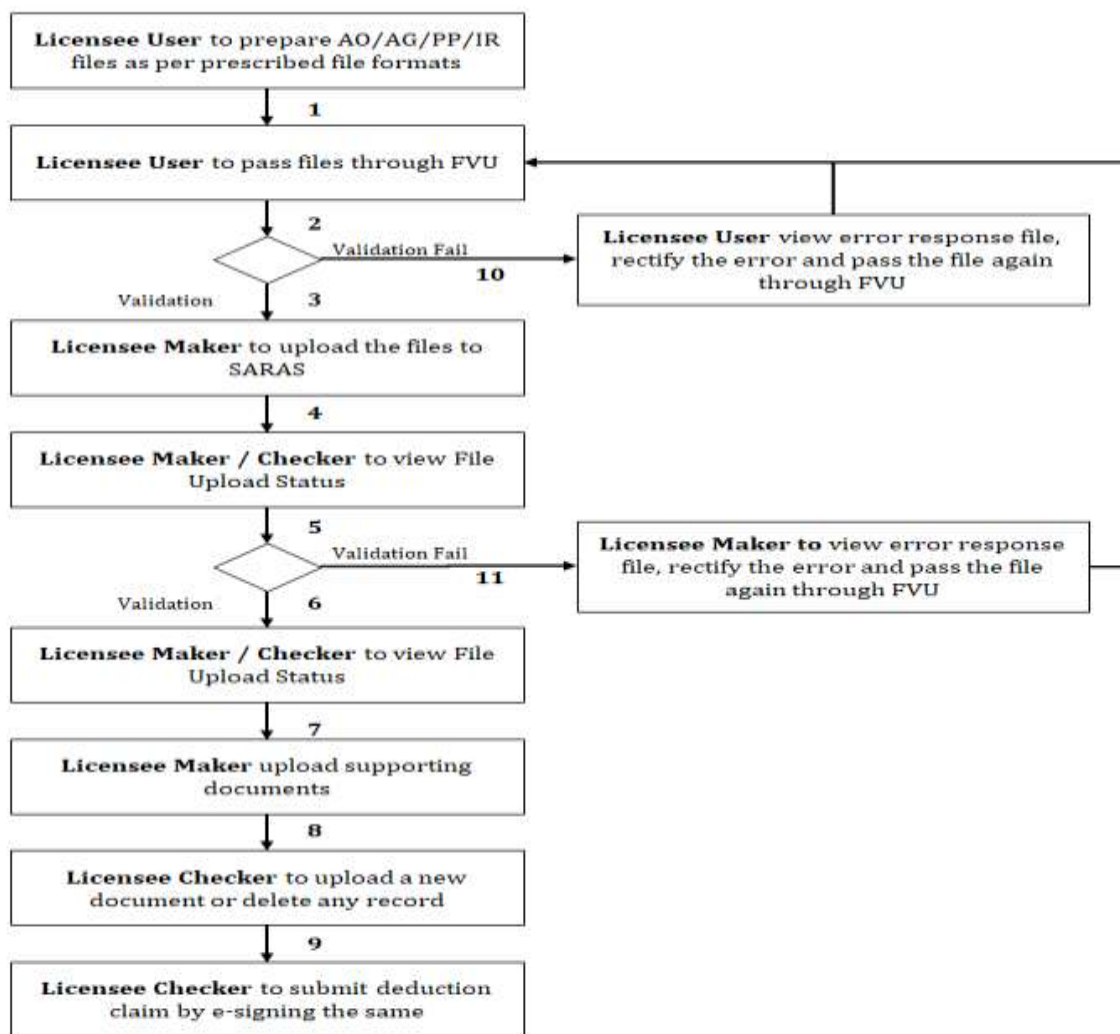


Scenario-I : 1--2--3--4

4. Deduction Claim and Verification:

4.1 Quarterly Submission of deduction Claims

Quarterly Submission of Deduction Claims



Scenario-I : 1--2--3--4--5--6--7--8--9

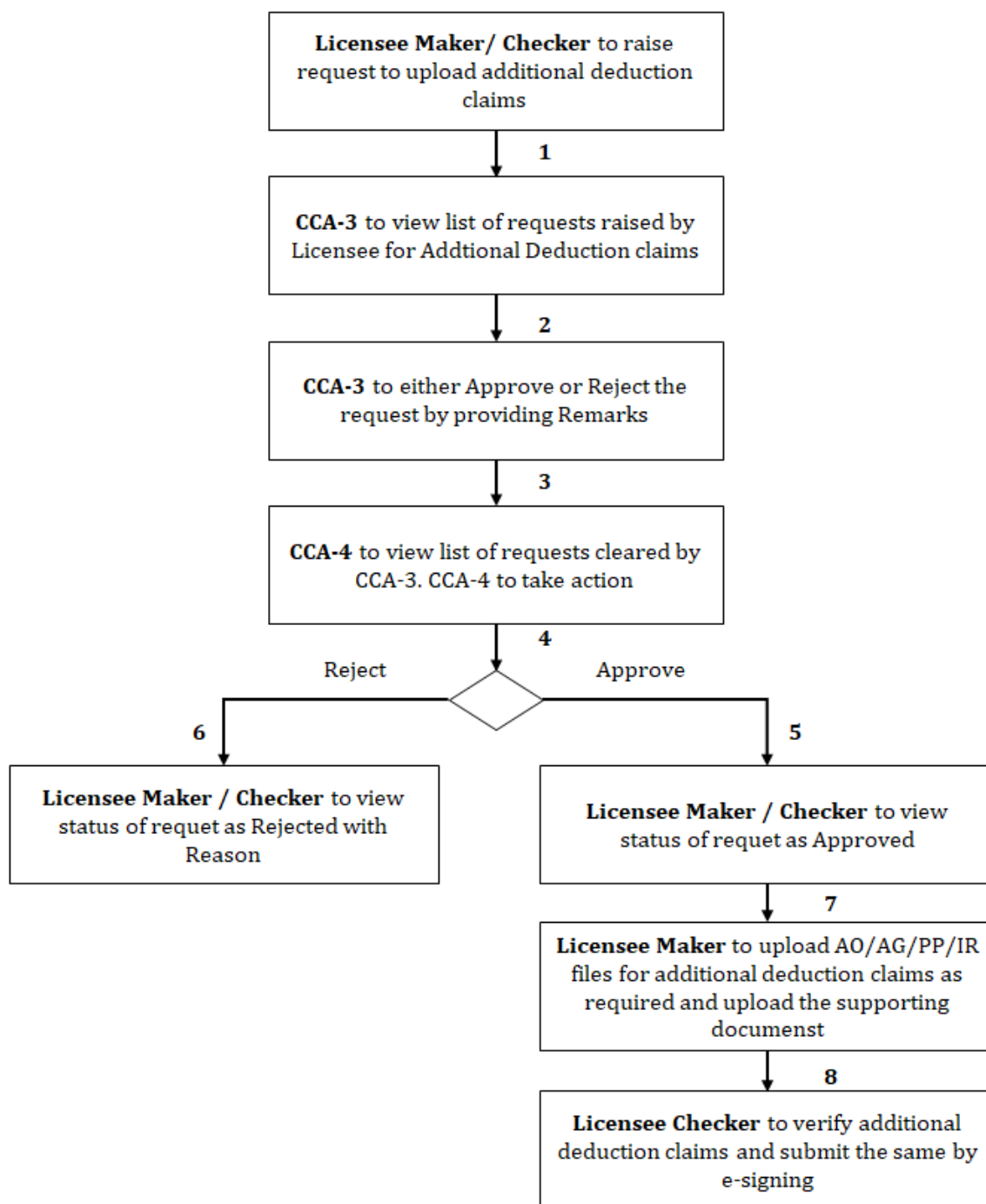
Scenario-II : 1--2--10--2--3--4--5--6--7--8--9

Scenario-I : 1--2--3--4--5--11--2--3--4--5--6--7--8--9

Scenario-II : 1--2--10--2--3--4--5--11--2--3--4--5--6--7--8--9 (Optional)

4.2 Request for Submission of Additional deduction Claims

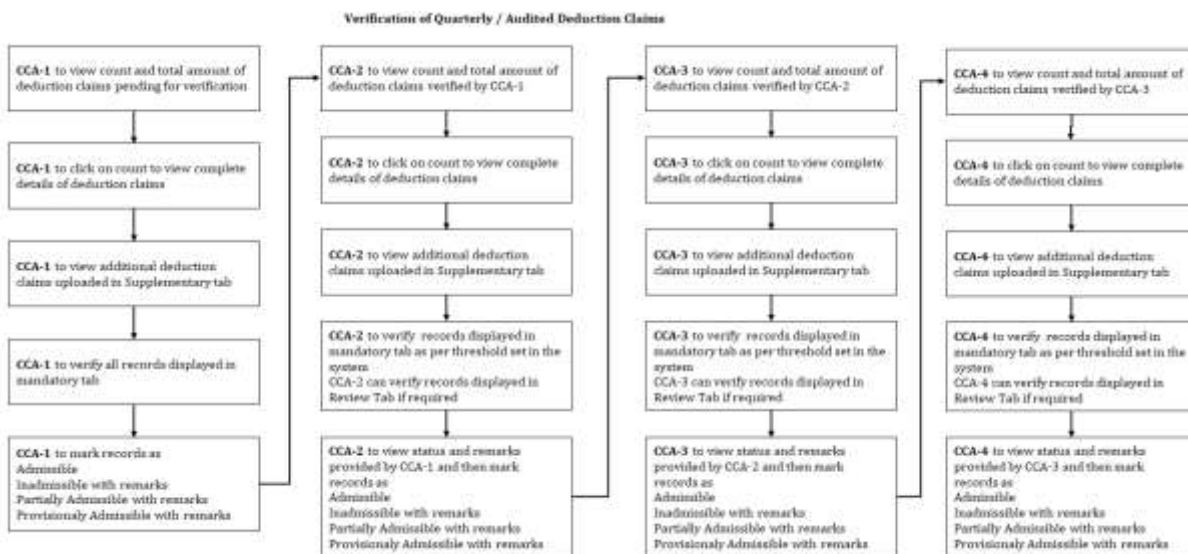
Request for Submission of Additional Deduction Claims



Scenario-I : 1--2--3--4--5--7--8

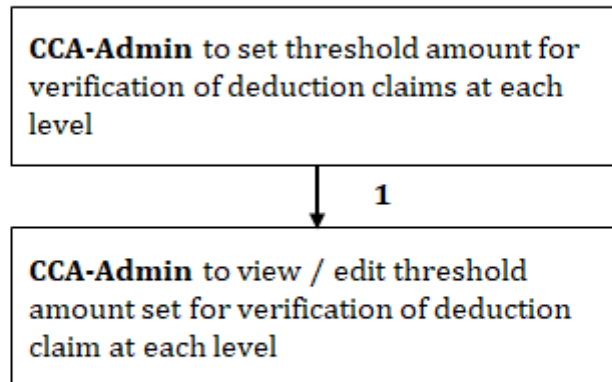
Scenario-II : 1--2--3--4--6

4.3 Verification of Quarterly/Audited deduction Claims



4.4 Setting of Threshold amount for deduction verification process

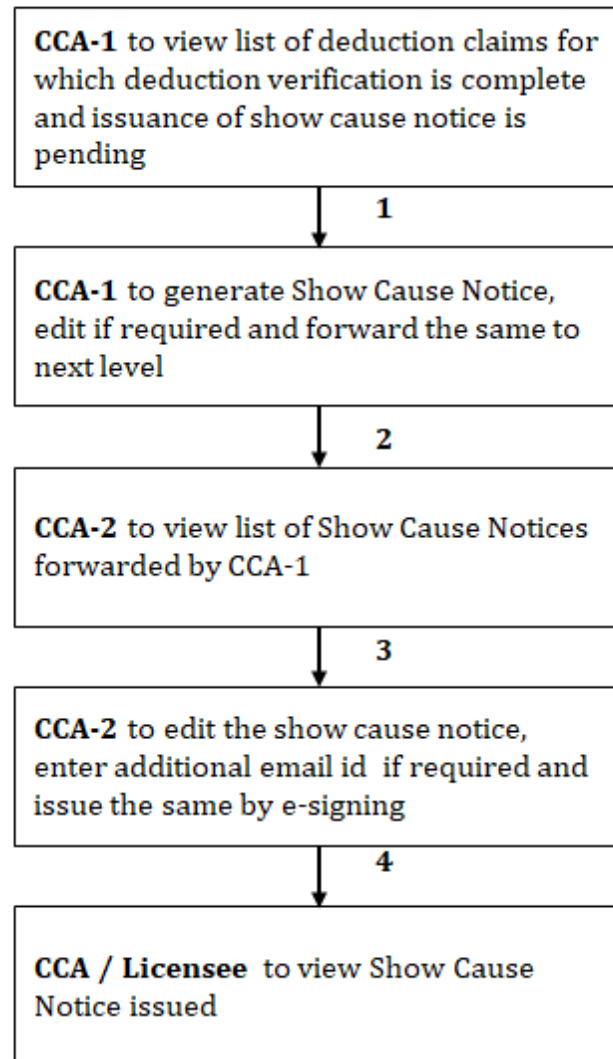
Setting of Threshold amount for deduction verification process



Scenario-I : 1

4.5 Issuance of Show Cause Notice

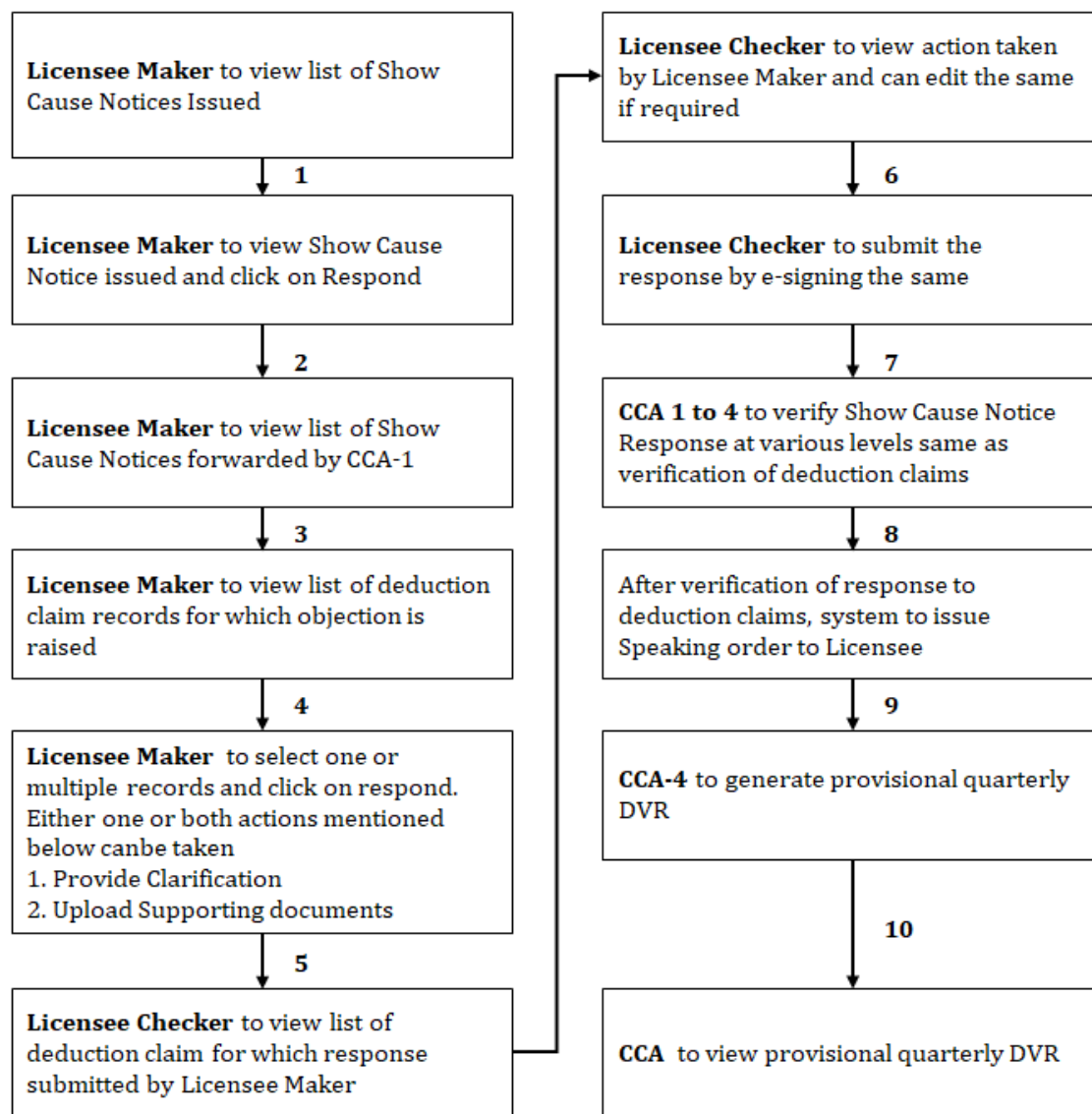
Issuance of Show Cause Notice



Scenario-I : 1--2--3--4

4.6 View and Respond to Show Cause Notice

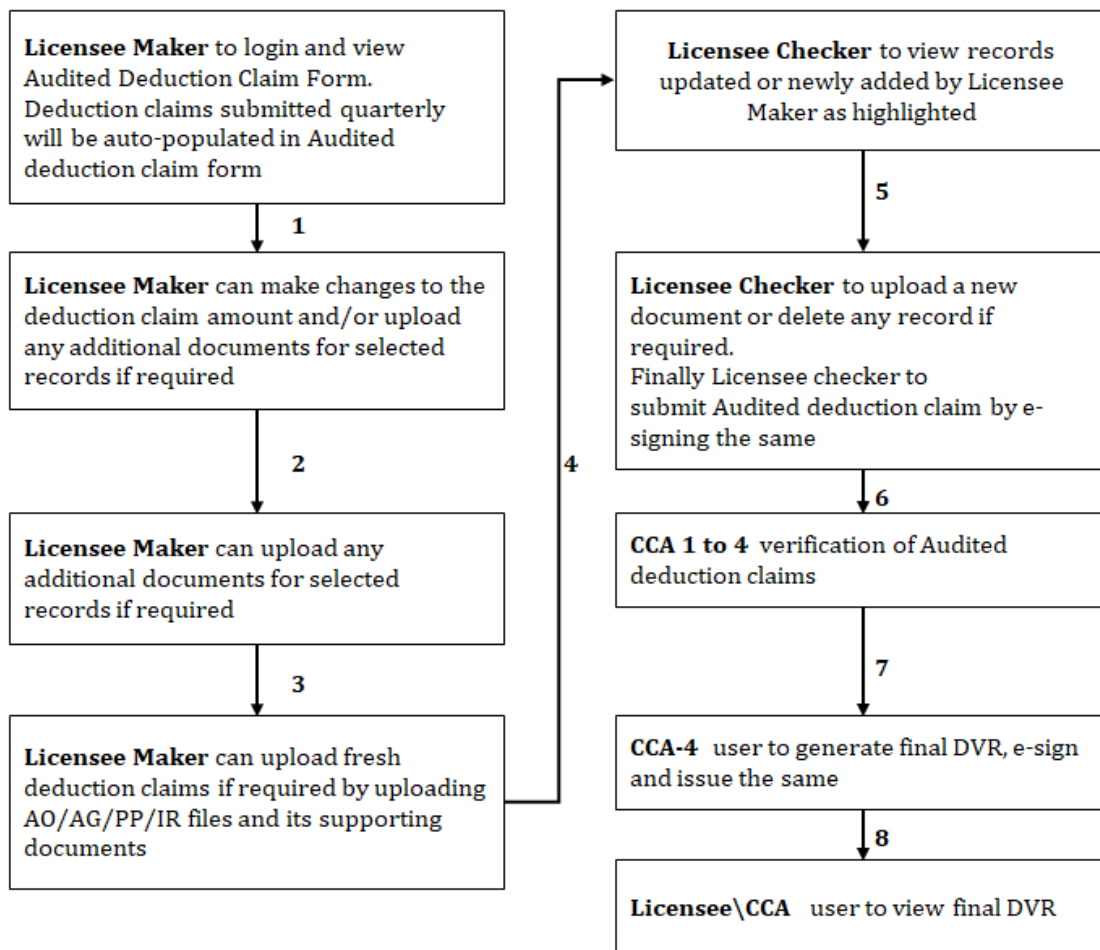
View and Respond to Show Cause Notice



Scenario-I : 1--2--3--4--5--6--7--8--9--10

4.7 Submission of Audited deduction claims

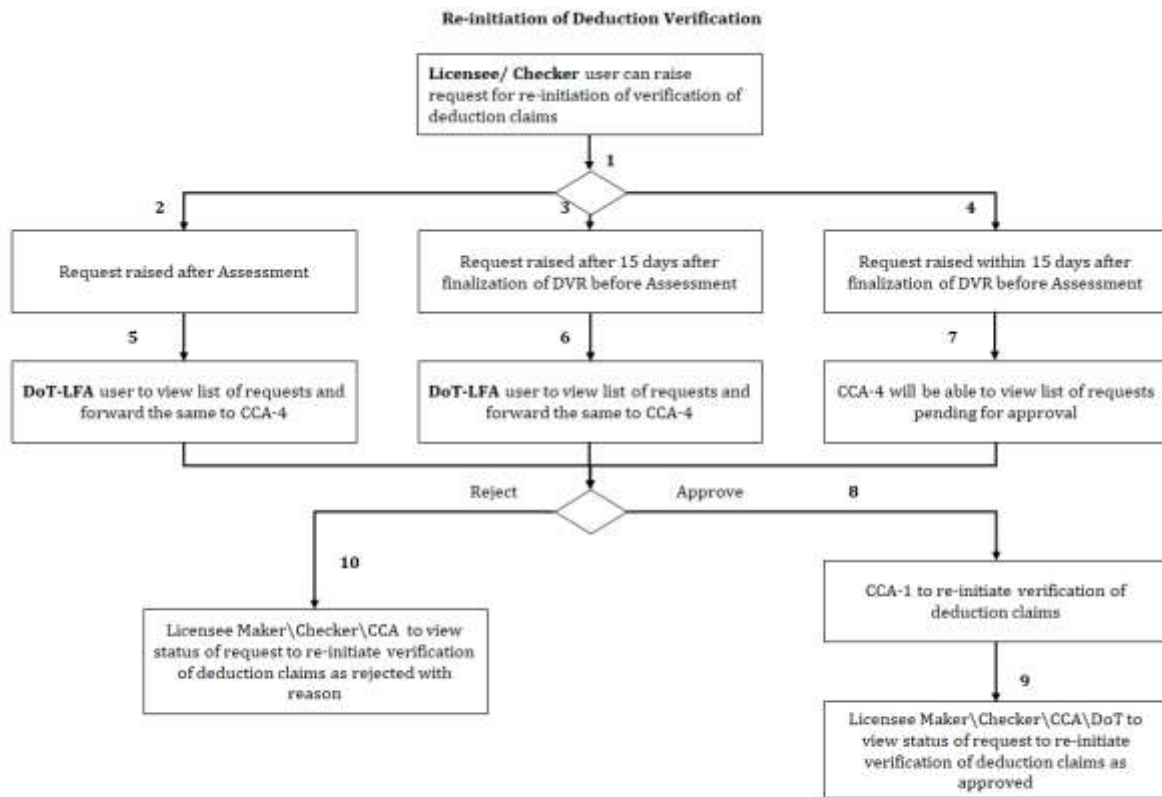
Submission of Audited Deduction Claims



Scenario-I : 1--2--3--4--5--6--7--8

Scenario-I : Audited Deduction Claim submission without submitting quarterly deduction claims

4.8 Re-initiation of deduction verification



Scenario-I : 1--3--6--8--9

Scenario-II : 1--4--7--8--9

Scenario-II : 1--2--5--8--9

Scenario-II : 1--3--6--10

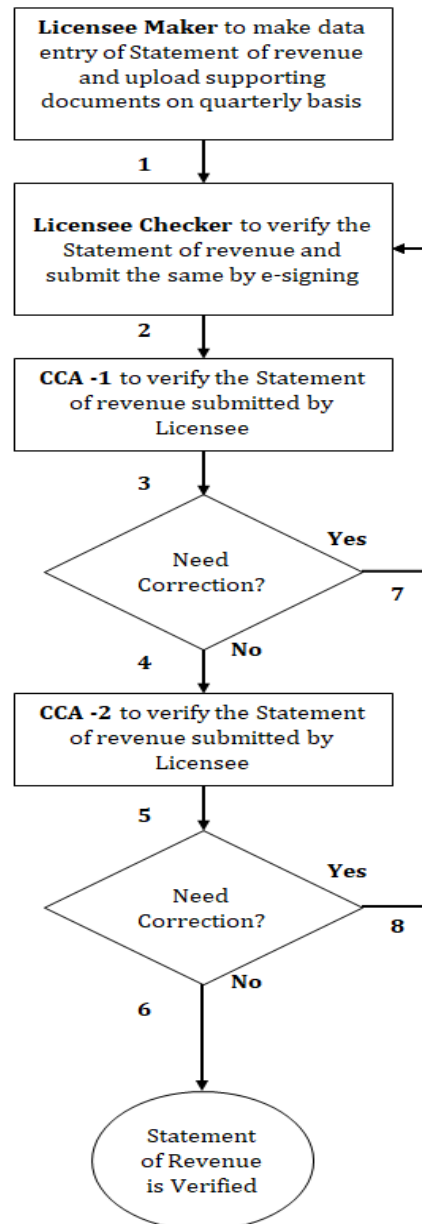
Scenario-II : 1--2--5--10 (Optional)

Scenario-II : 1--4--7--10 (Optional)

5. License Fee Assessment

5.1 Quarterly Statement of Revenue submission

Quarterly Statement Of Revenue Submission



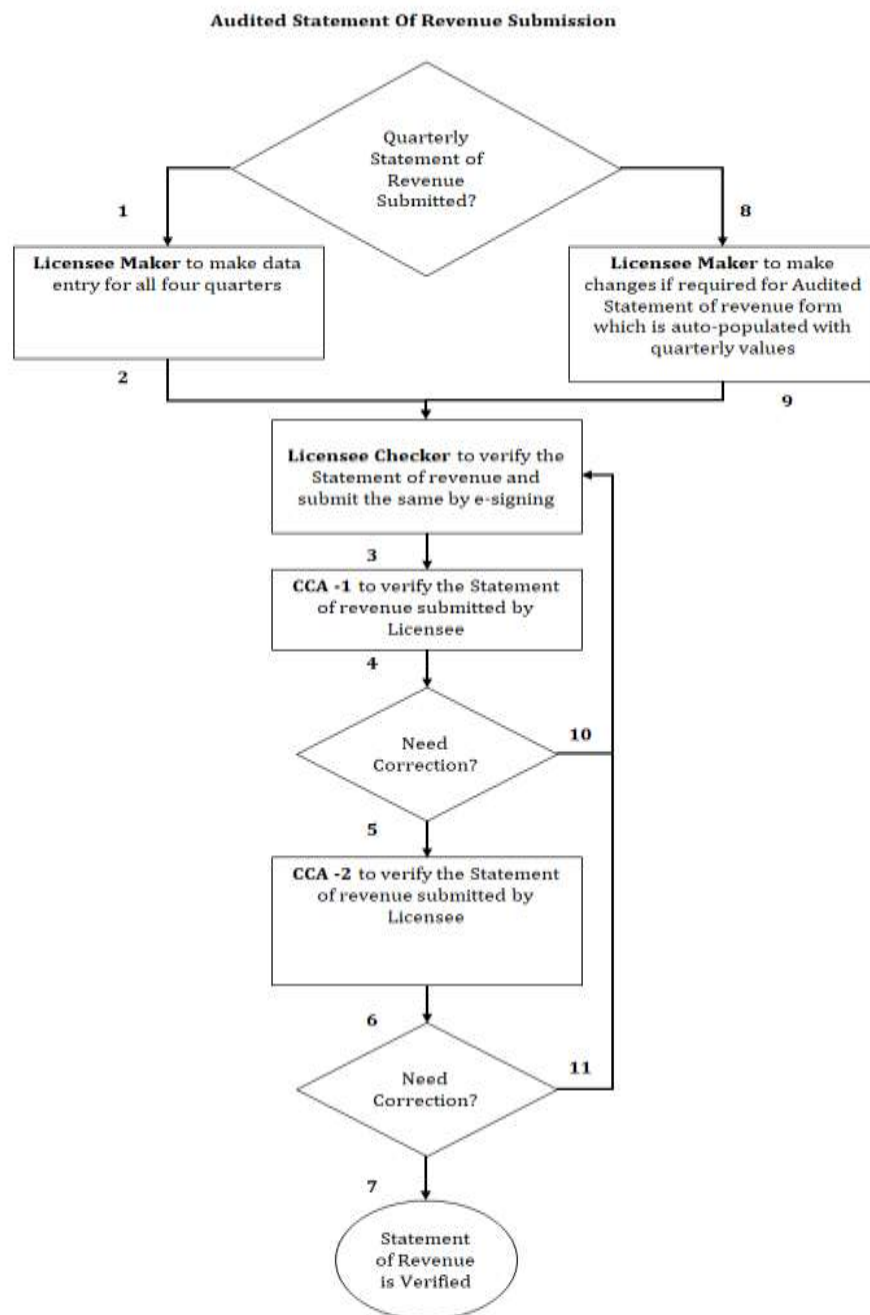
Scenario-I : 1--2--3--4--5--6

Scenario-II : 1--2--3--7--2--3--4--5--6

Scenario-III : 1--2--3--4--5--8--2--3--4--5--6 (Optional)

Scenario-IV : Entry of Active Terminals for Terminal Based License

5.2 Audited Statement of Revenue submission



Scenario-I : 1--2--3--4--5--6--7

Scenario-II : 8--9--3--4--5--6--7

Scenario-III : 1--2--3--4--10--3--4--5--6--7

Scenario-IV : 8--9--3--4--10--3--4--5--6--7 (Optional)

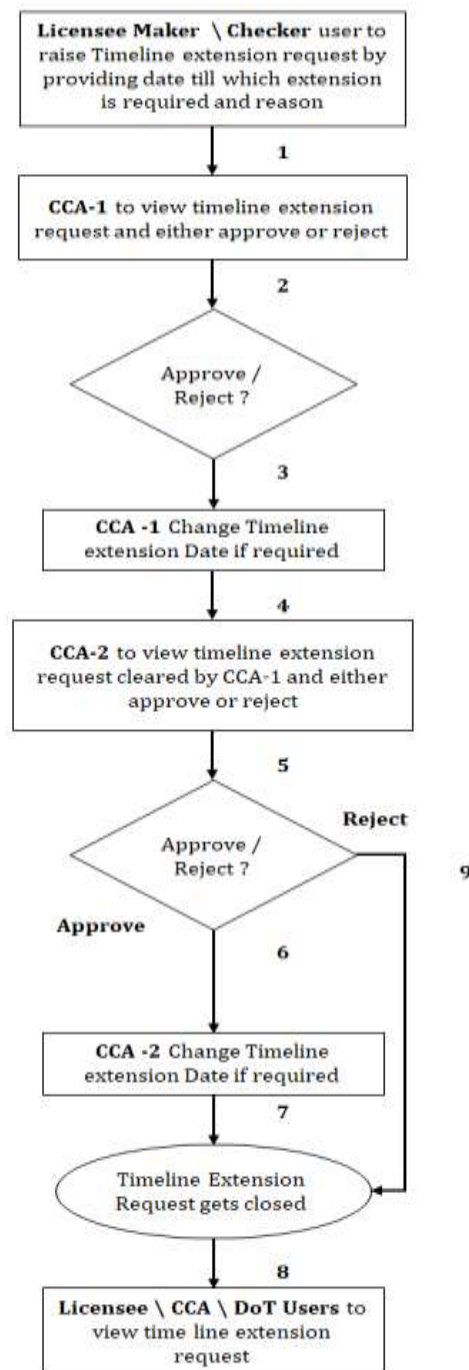
Scenario-V : 1--2--3--4--5--6--11--3--4--5--6--7 (Optional)

Scenario-VI : 8--9--3--4--5--6--11--3--4--5--6--7 (Optional)

Scenario-VII : Entry of Active Terminals for Terminal Based License

5.3 Timeline Extension Request

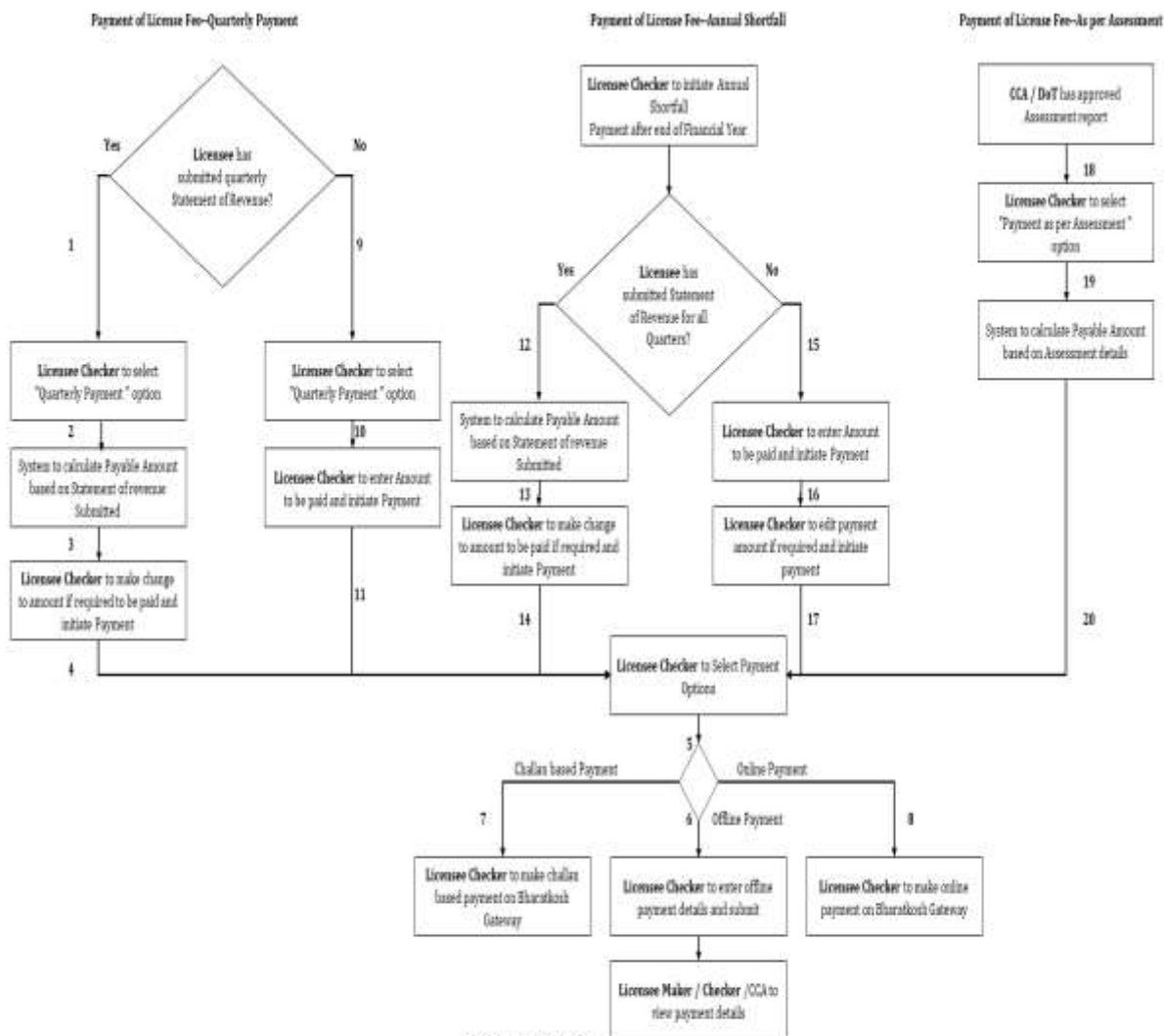
Timeline Extension Request



Scenario-I : 1--2--3--4--5--6--7--8

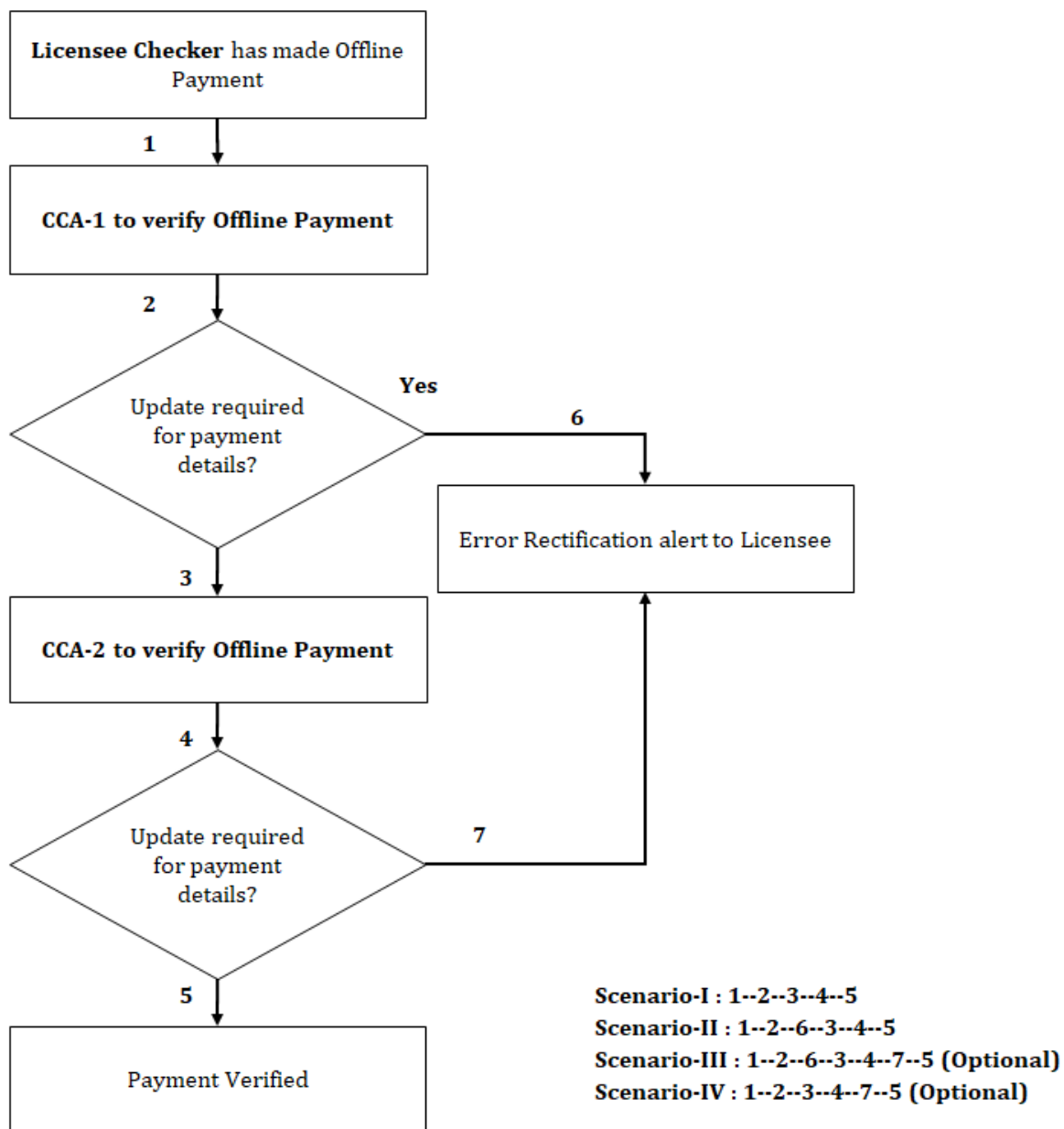
Scenario-II : 1--2--3--4--5--9--8

5.4 Payment of Licensee Fee

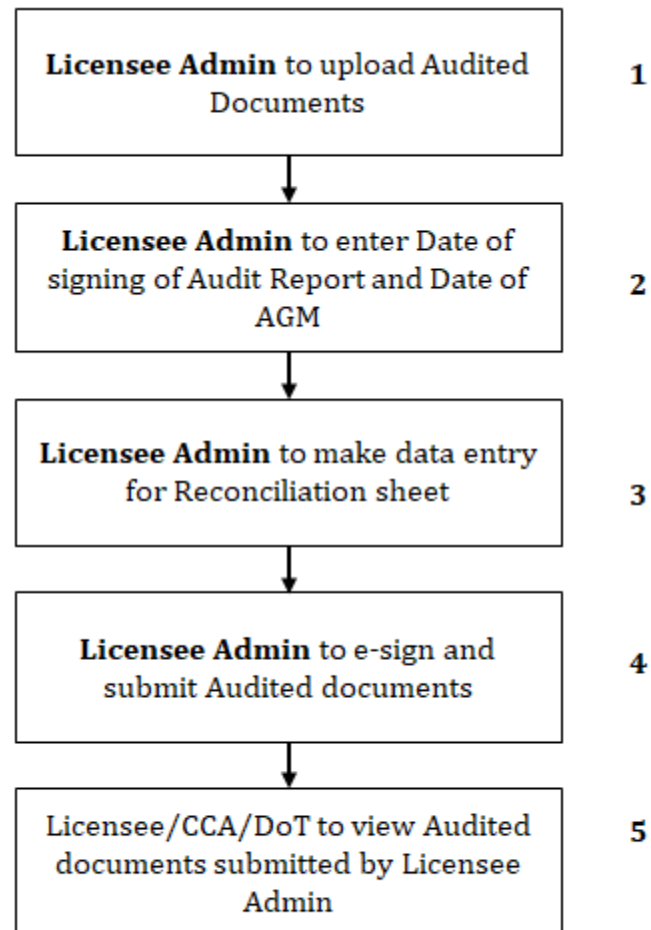


Scenario-I : 1-2-3-4-5-6
 Scenario-II : 1-2-3-4-5-8
 Scenario-III : 1-2-3-4-5-7 (Optional)
 Scenario-IV : 9-10-11-5-6
 Scenario-V : 9-10-11-5-8 (Optional)
 Scenario-VI : 9-10-11-5-7 (Optional)
 Scenario-VII : 12-13-14-5-6
 Scenario-VIII : 12-13-14-5-7 (Optional)
 Scenario-IX : 12-13-14-5-8 (Optional)
 Scenario-X : 15-16-17-5-6
 Scenario-XI : 15-16-17-5-7 (Optional)
 Scenario-XII : 15-16-17-5-8 (Optional)
 Scenario-XIII : 18-19-20-5-6
 Scenario-XIV : 18-19-20-5-7 (Optional)
 Scenario-XV : 18-19-20-5-8 (Optional)
 Scenario-XVI : LF Payment for Terminal Based License

5.5 Verification of Offline Payment

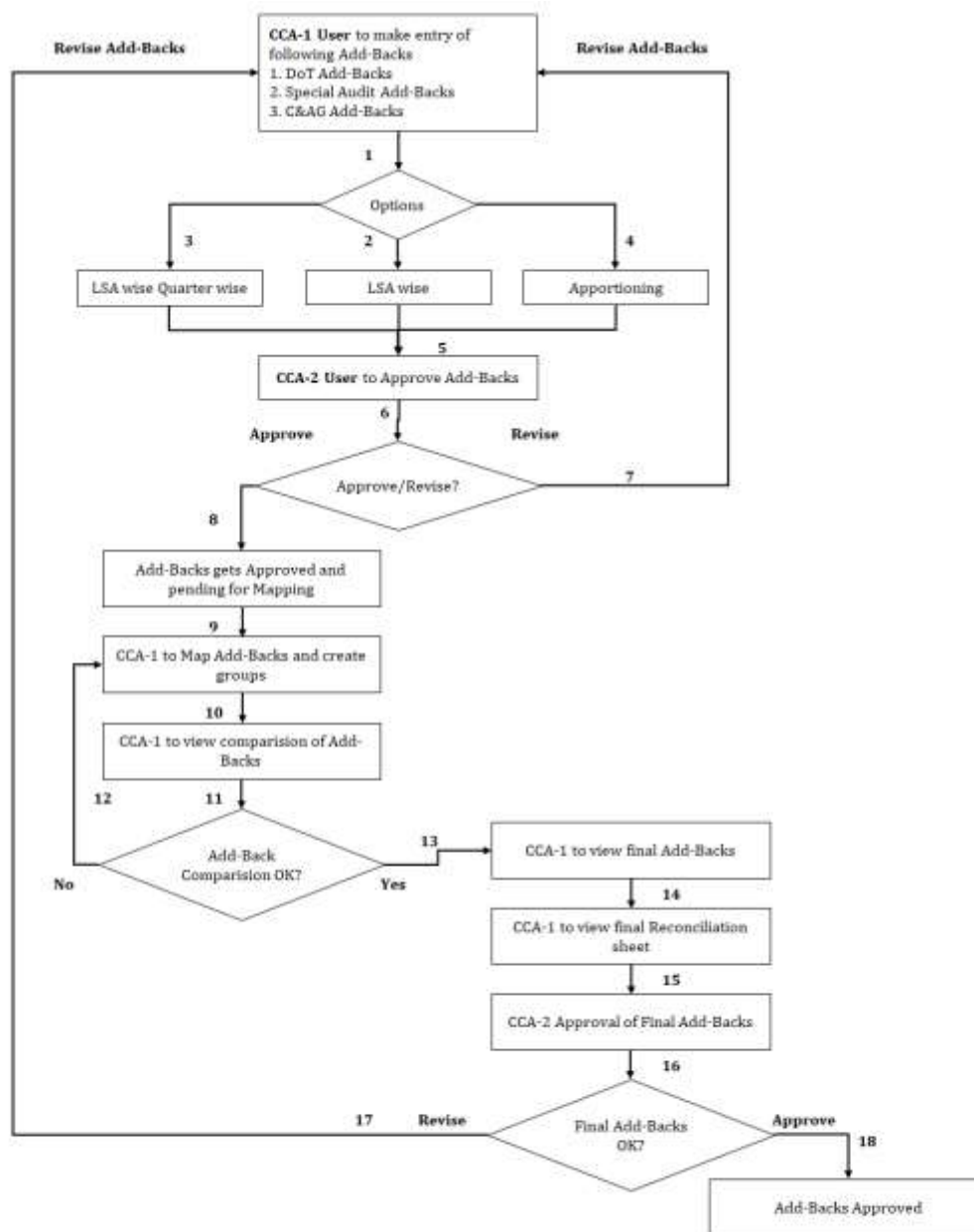


5.6 Submission of Audited documents by Licensee Admin



Scenario-I : 1--2--3--4--5

5.7 Add Backs



Scenario-I : 1~2~5~6~8~9~10~11~13~14~15~16~18

Scenario-II : 1~3~5~6~8~9~10~11~13~14~15~16~18 (Optional)

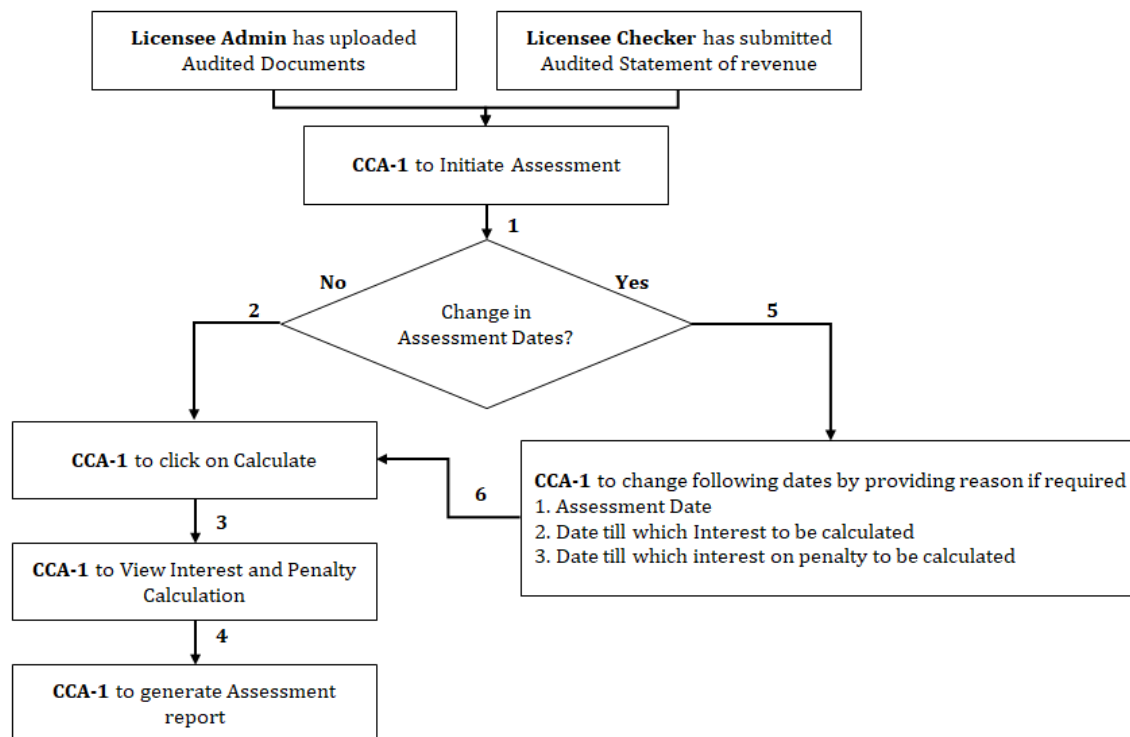
Scenario-III : 1~4~5~6~8~9~10~11~13~14~15~16~18 (Optional)

Scenario-IV : 1~2~5~6~7~1~2~5~6~8~9~10~11~13~14~15~16~18 (Optional)

Scenario-V : 1~2~5~6~8~9~10~11~12~10~11~13~14~15~16~18

Scenario-VI : 1~2~5~6~8~9~10~11~13~14~15~16~17~1~2~5~6~8~9~10~11~13~14~15~16~18 (Optional)

5.8 Initiate Assessment



Scenario-I : 1--2--3--4

Scenario-II : 1--5--6--3--4 (Optional)

Scenario-III : All Payments done after end of Financial Year

Scenario-IV : Payment for Q4 done post 25th March

Scenario-V : Payment for Q4 done before 25th March but amount less than LF payable for Q3

Scenario-VI : Payment for Q4 done before 25th March but amount more than LF payable for Q3

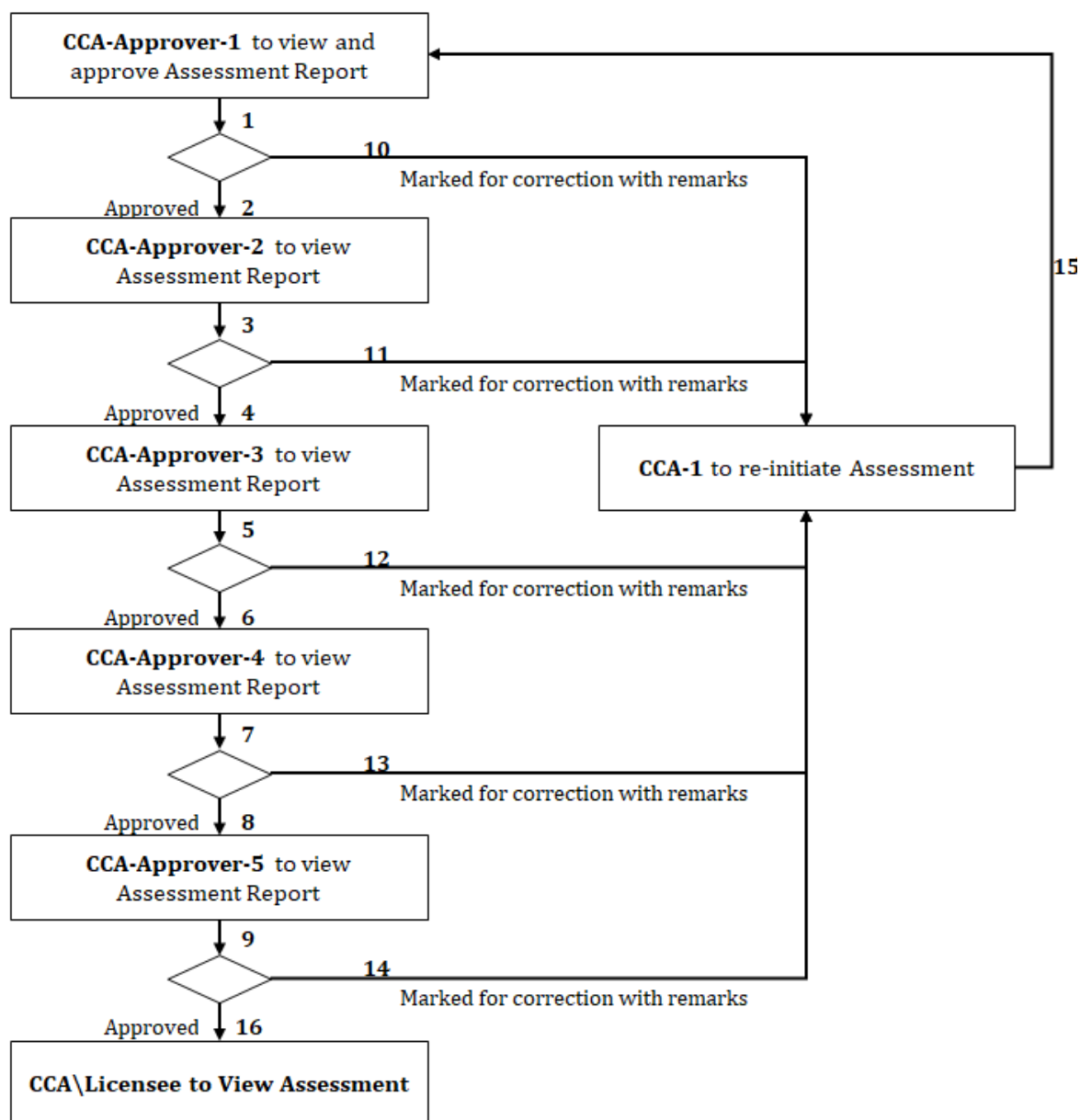
Scenario-VII : Payment for Q3 is more than payable amount of Q3

Scenario-VIII : Assessment for UL License where Presumptive AGR is applicable

Scenario-IX : Assessment for Terminal based License

Scenario-X : Assessment for centralized License

5.9 Approval of Assessment Report

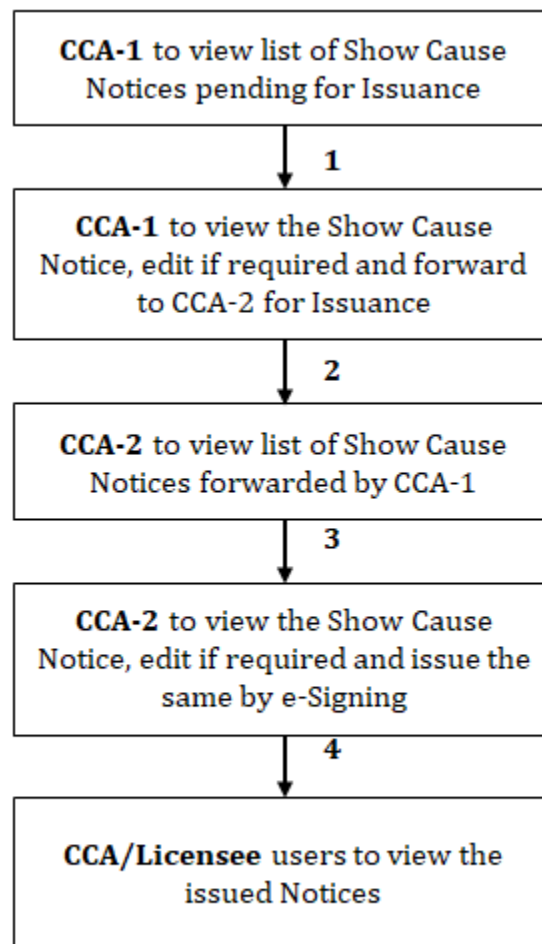


Scenario-I : 1--2--3--4--5--6--7--8--9--10--16

Scenario-II : 1--2--3--11--15--1--2--3--4--5--6--7--8--9--10--16

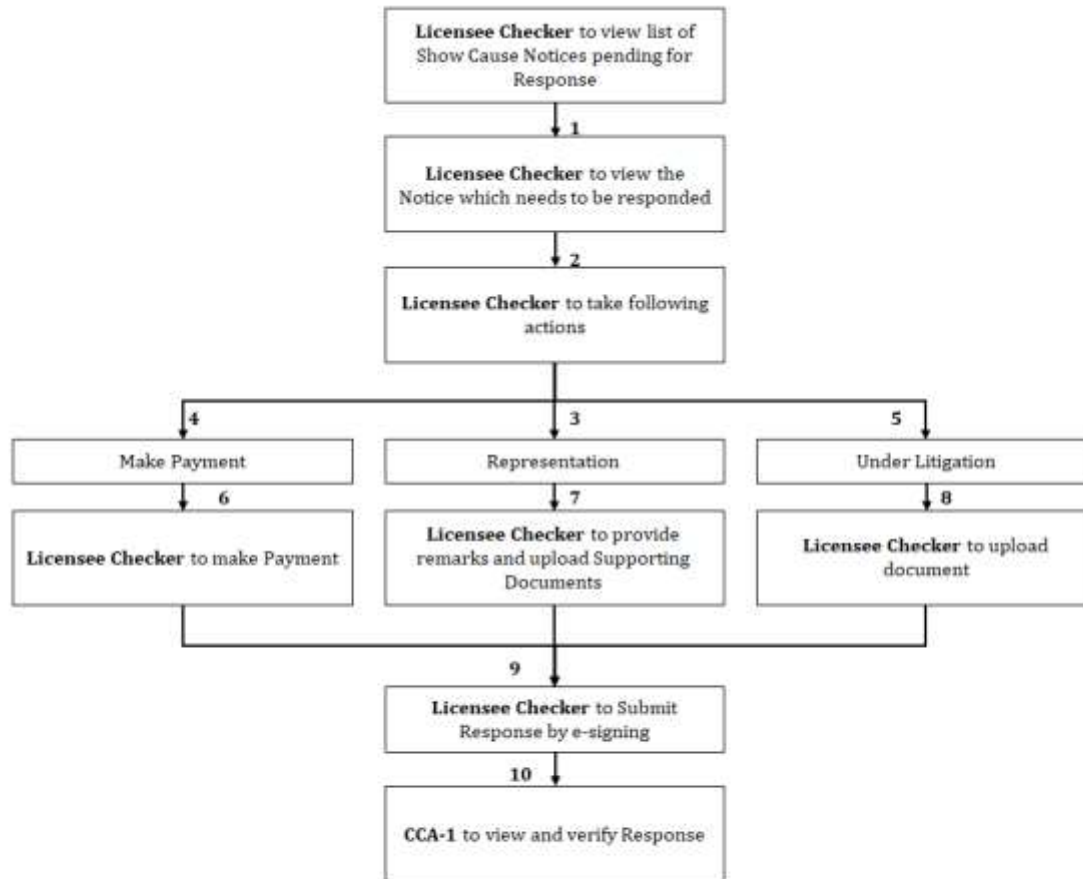
Scenario-III : Approval by configuring less then five levels

5.10 Issuance of Show Cause Notice



Scenario-I : 1--2--3--4

5.11 Respond to Show Cause Notice



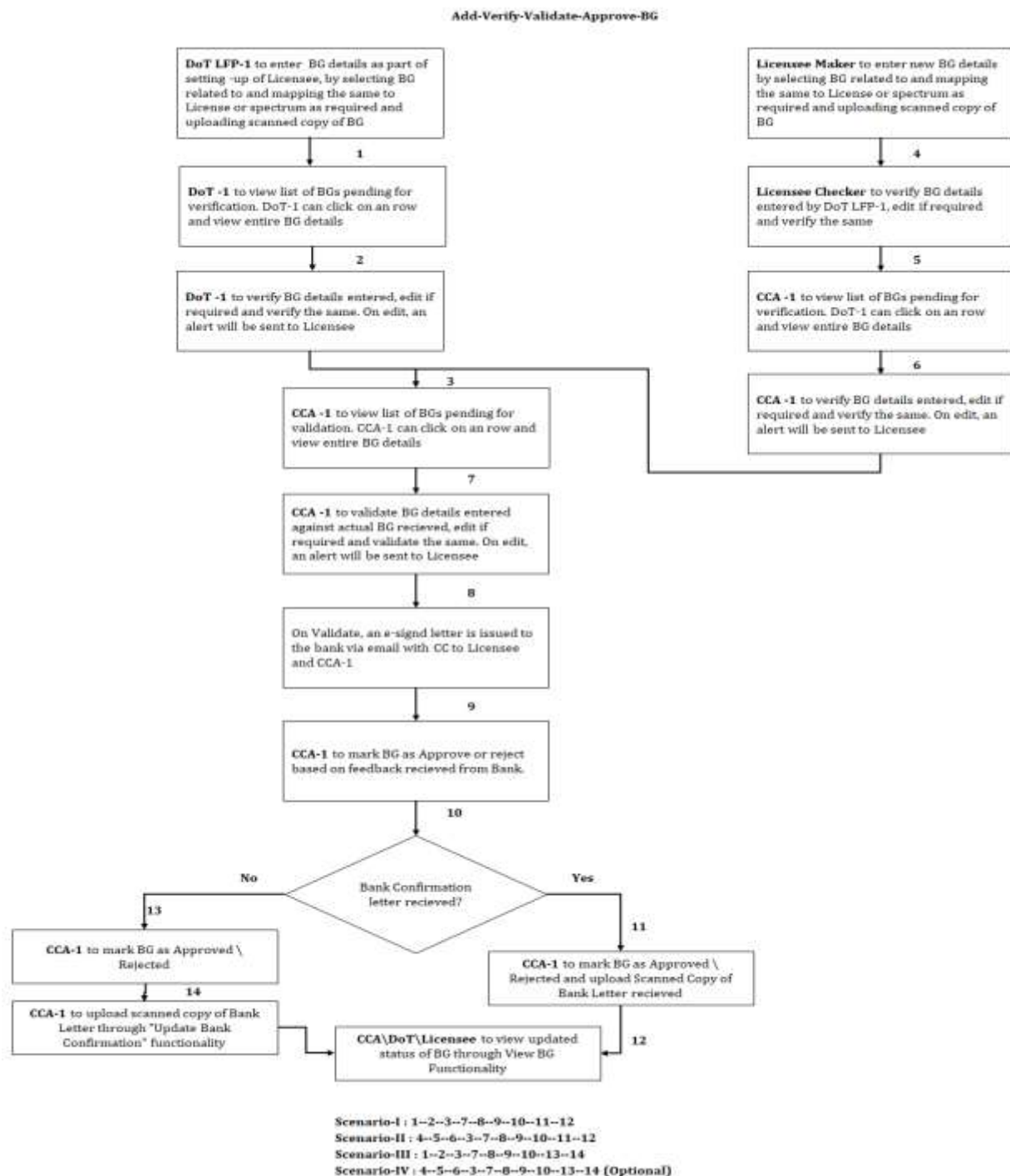
Scenario-I : 1--2--3--7--9--10

Scenario-II : 1--2--4--6--9--10 (Optional)

Scenario-III : 1--2--5--8--9--10 (Optional)

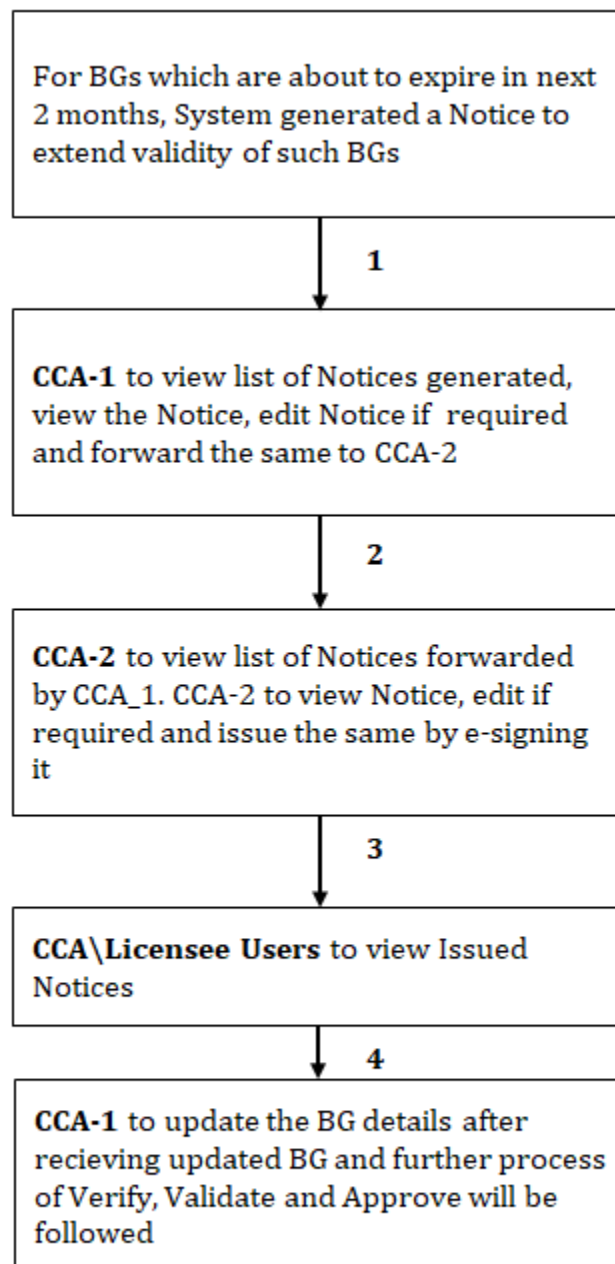
6. Bank Guarantee

6.1 Add Verify Validate Approve BG



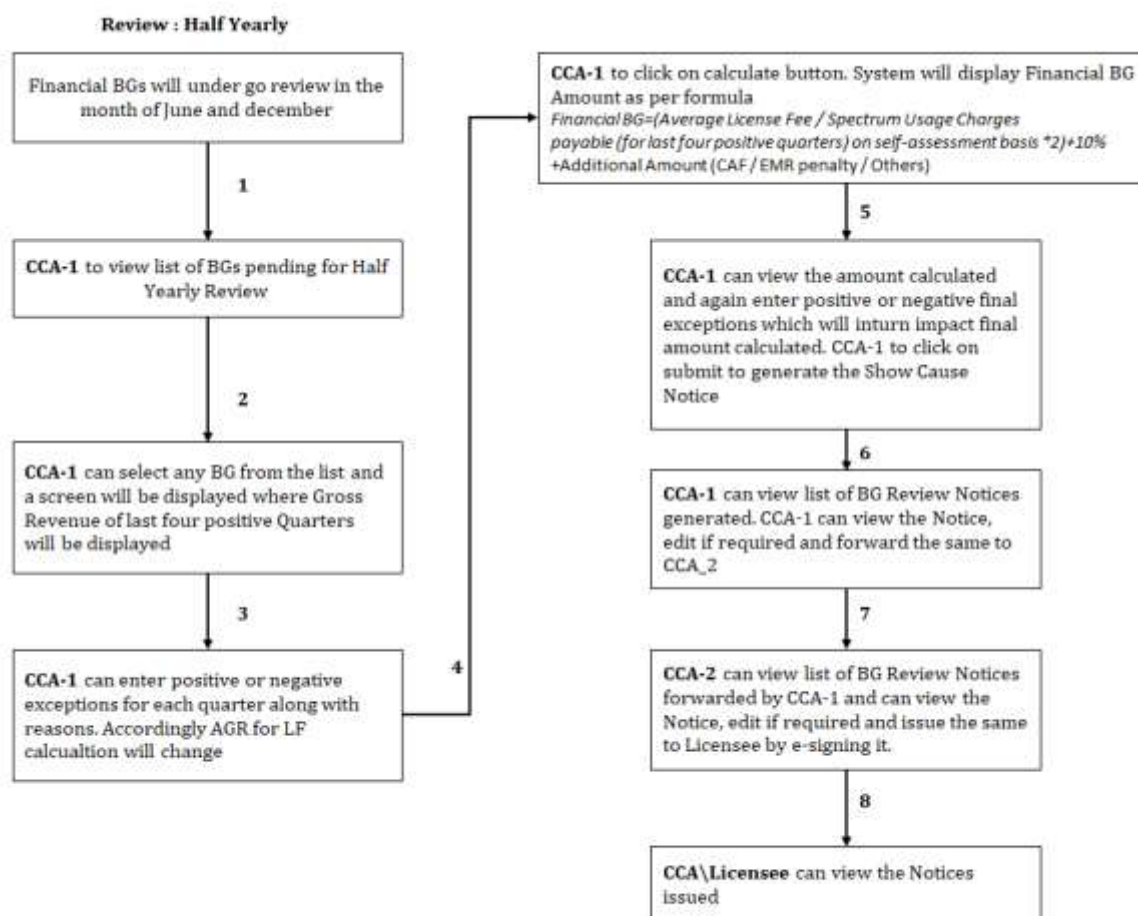
6.2 BG Review : Validity Check

Review : Validity Check

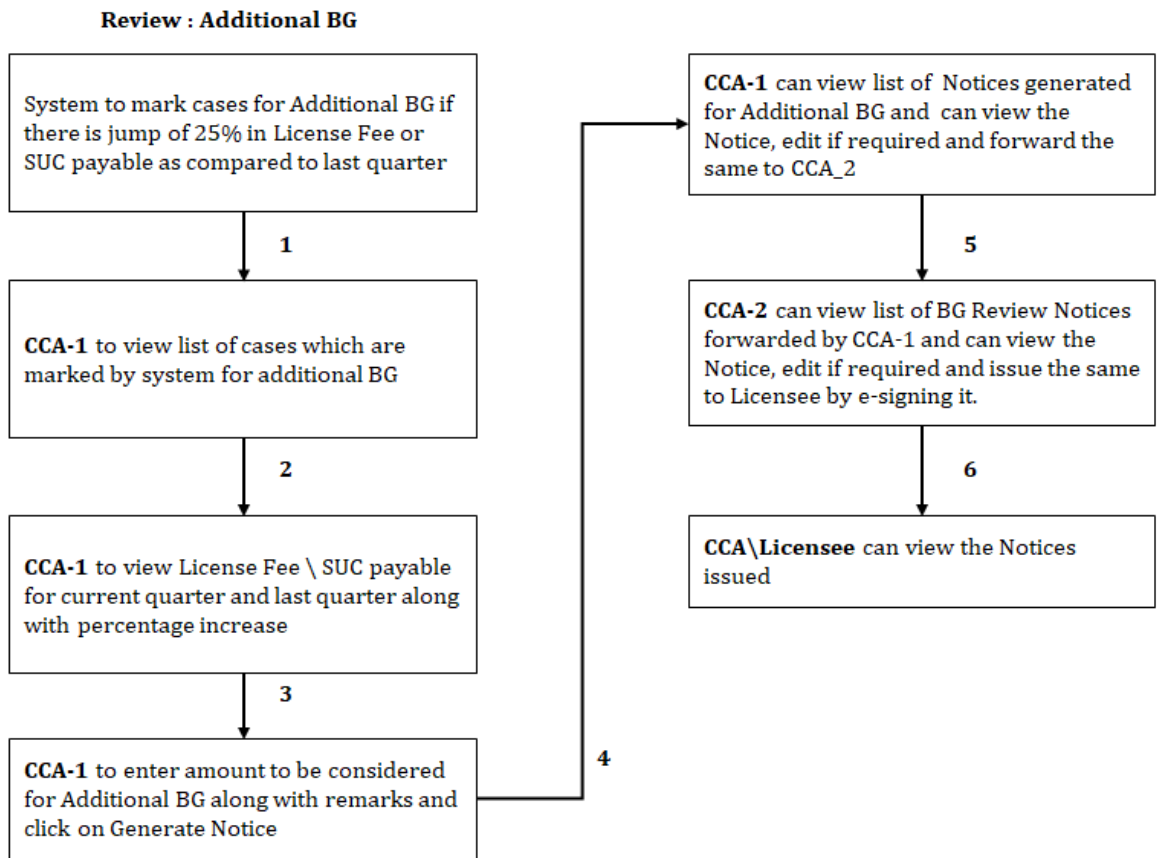


Scenario-I : 1--2--3--4

6.3 BG Review : Half Yearly

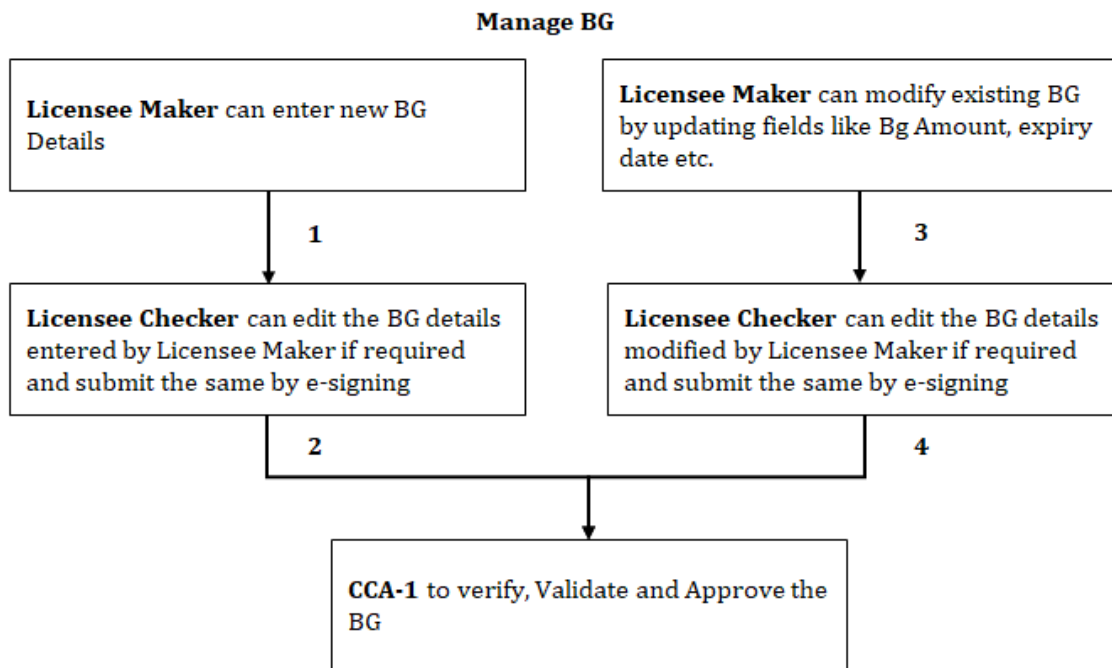


6.4 BG Review : Additional BG



Scenario-I : 1--2--3--4--5--6

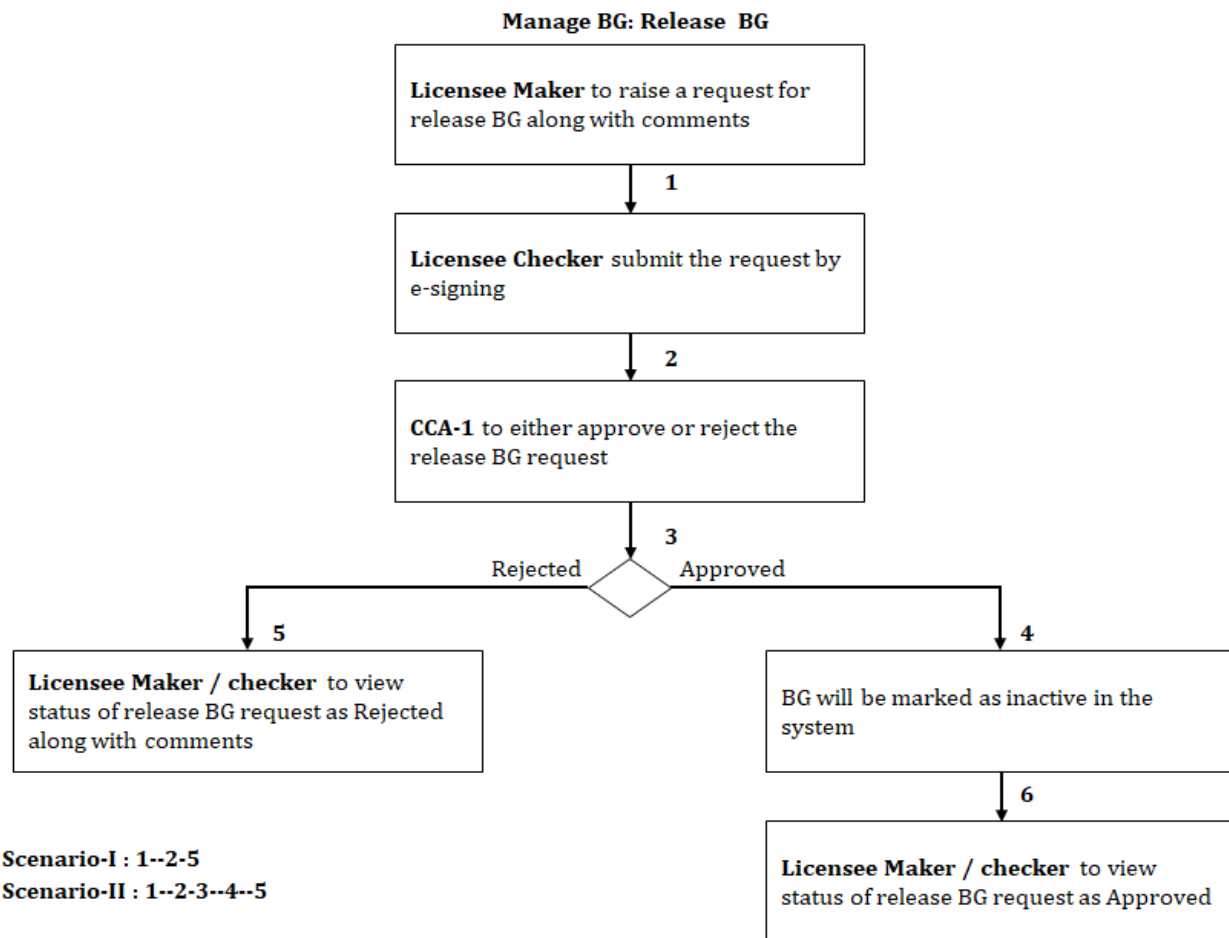
6.5 Manage BG



Scenario-I : 1--2

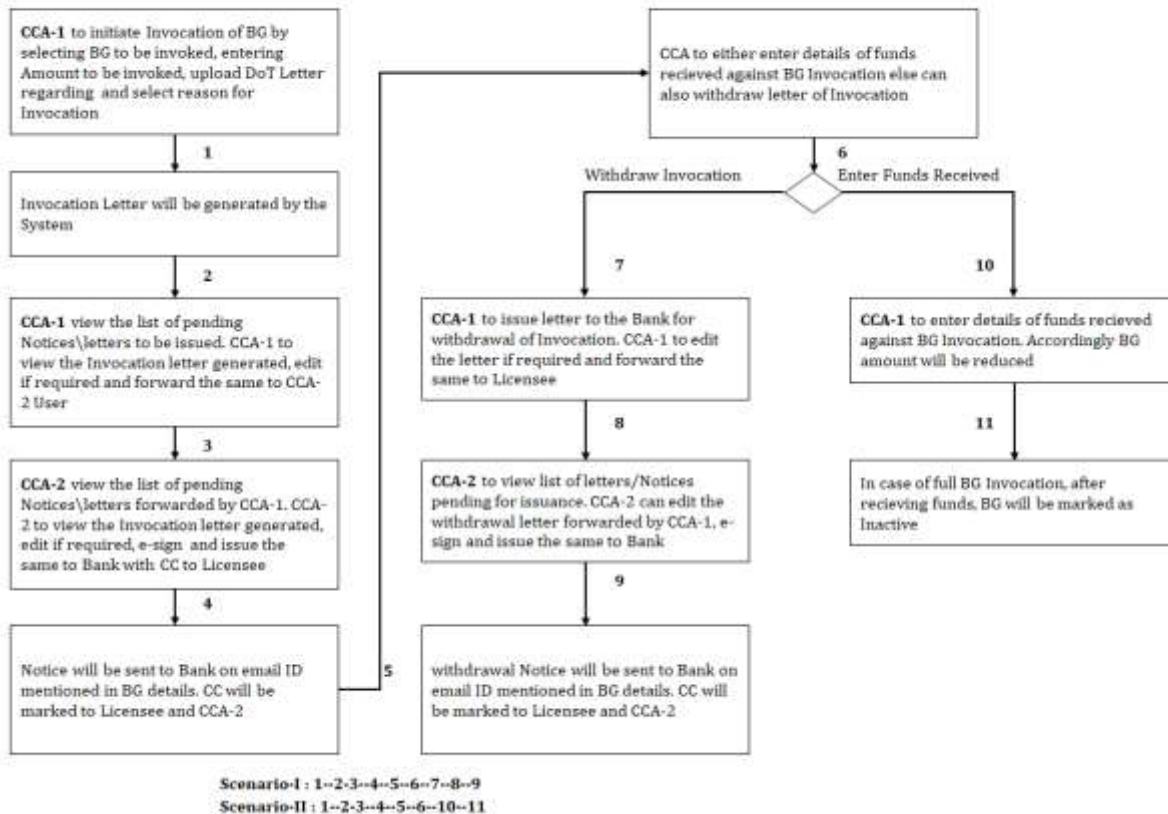
Scenario-II : 3--4

6.6 Release BG



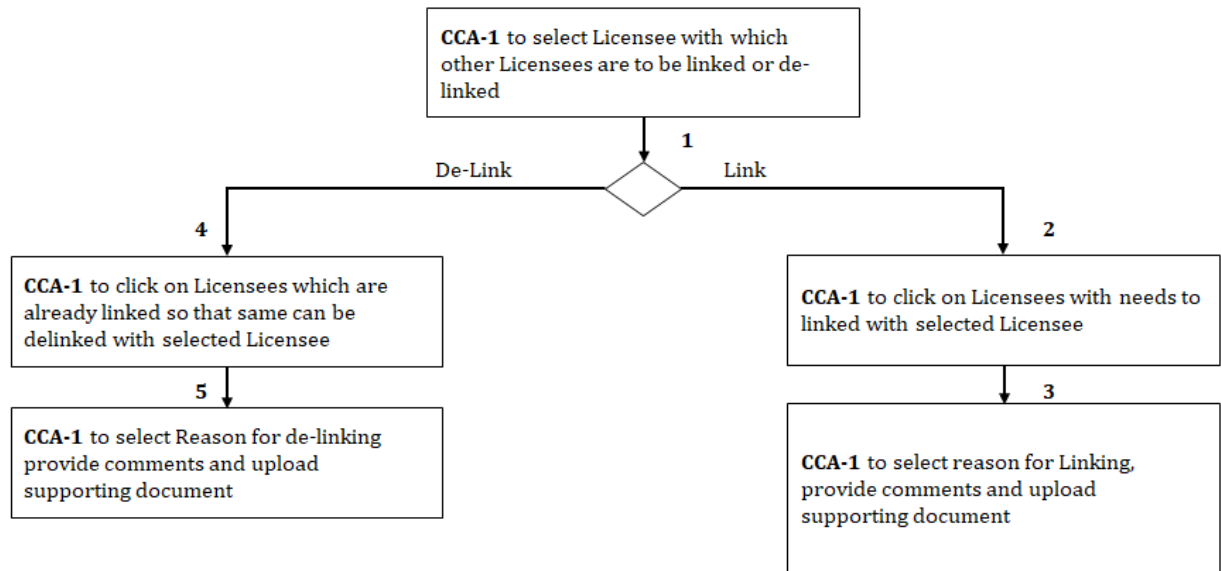
6.7 Invoke BG

Invoke BG



6.8 Link Licensees

Link Licensees

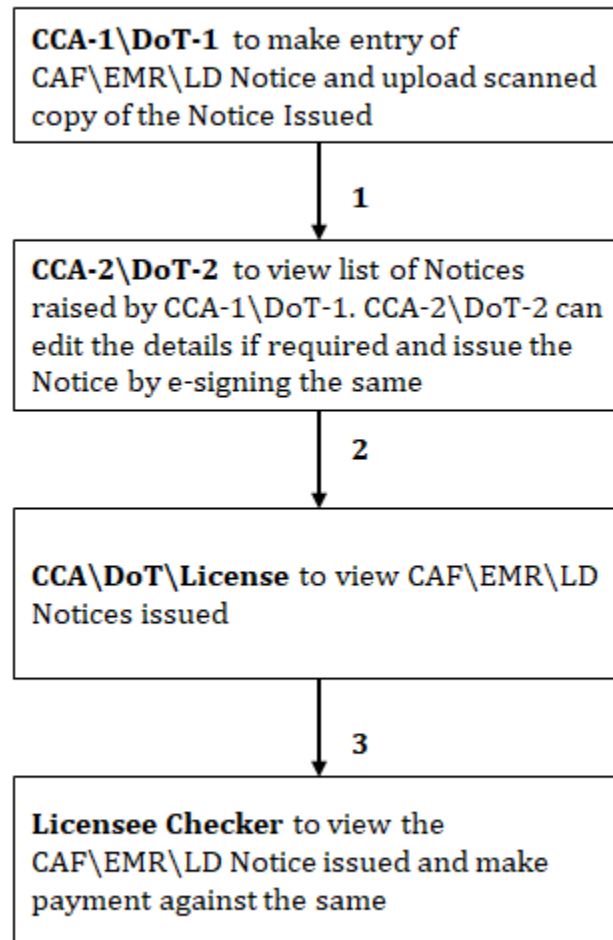


Scenario-I : 1--2--3

Scenario-II : 1--4--5

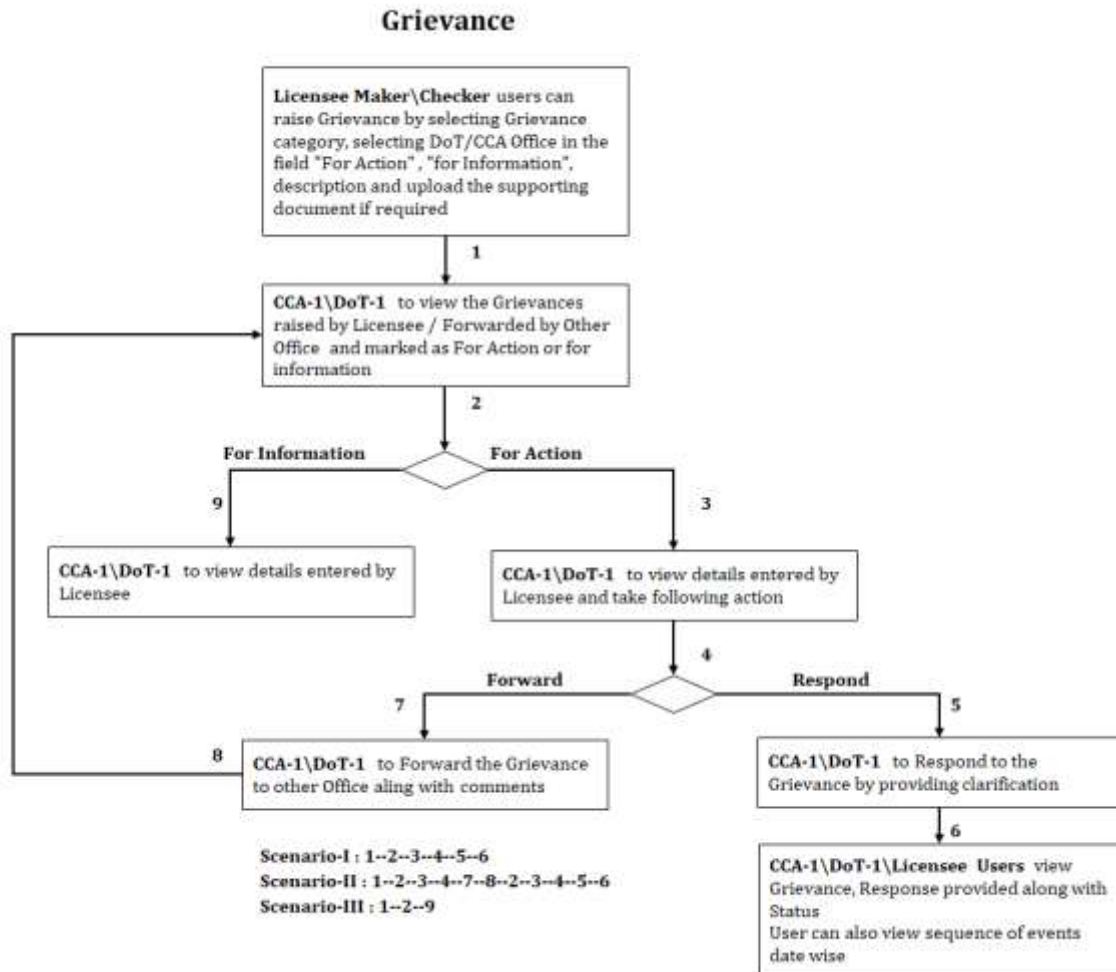
7. CAF\EMR\LD

7.1 Add CAF\EMR\LD Notice

Add CAF\EMR\LD Notice**Scenario-I : 1--2--3**

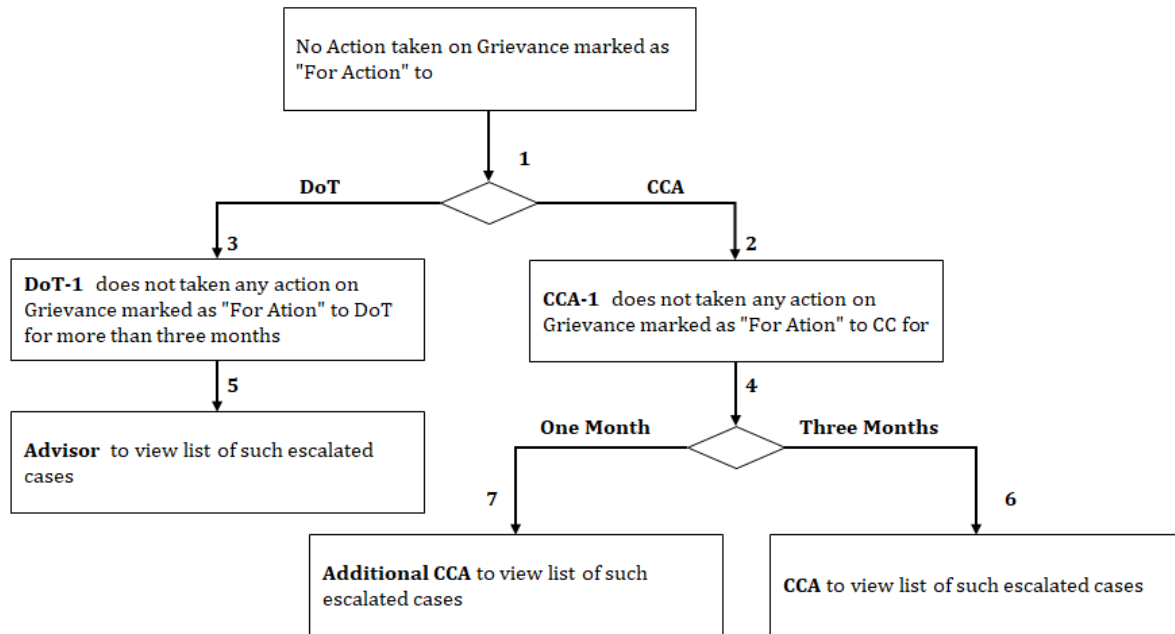
8. Grievance :

8.1 Add Grievance



8.2 Grievance Escalation

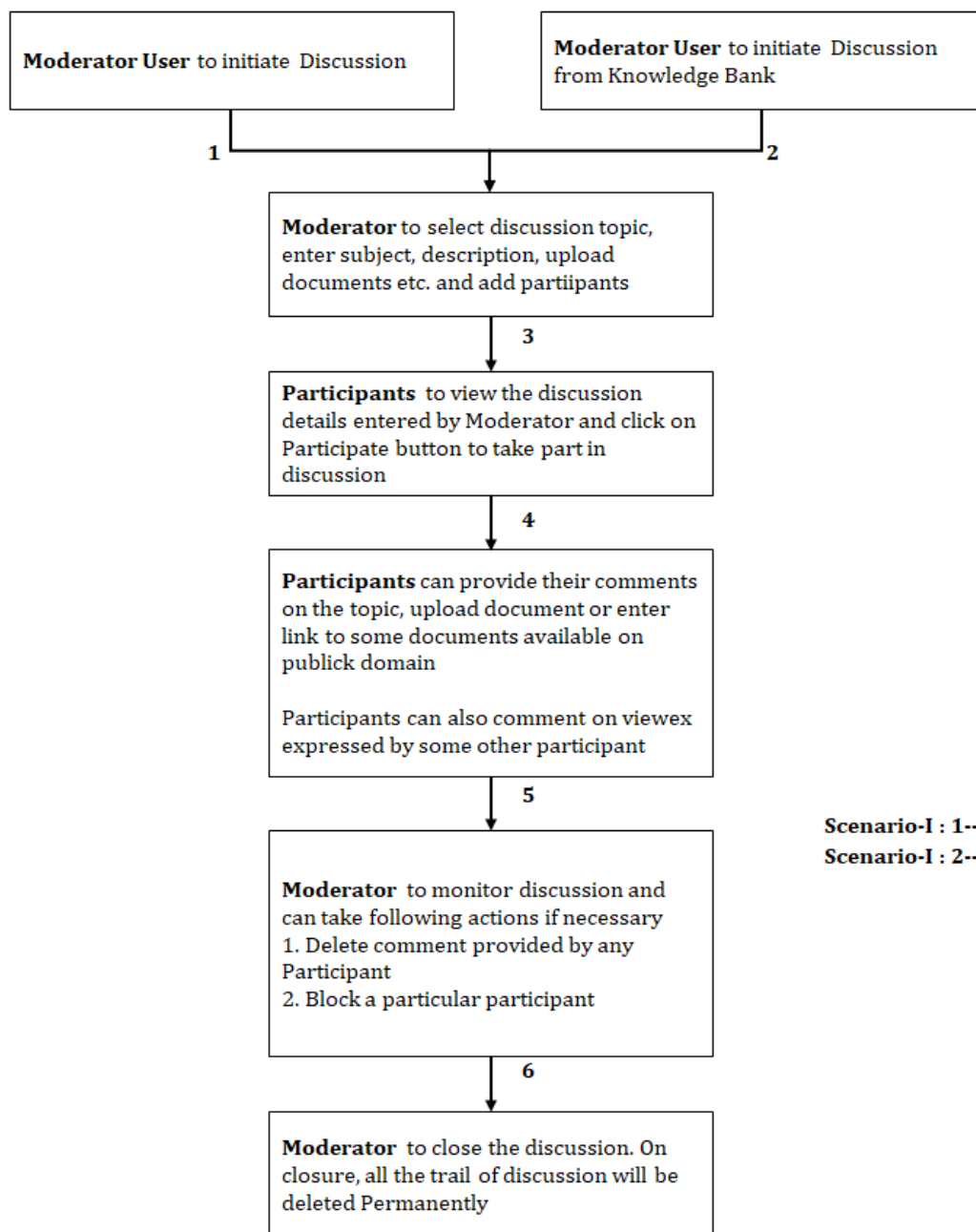
Grievance Escalation



Scenario-I : 1--2--4--6
Scenario-II : 1--2--4--7
Scenario-III : 1--3--5

9. Discussion Board:

Discussion Board



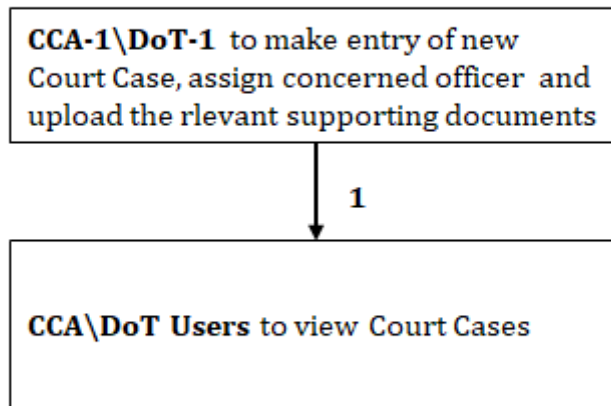
Scenario-I : 1--3--4--5--6

Scenario-I : 2--3--4--5--6

10. Court Case:

10.1 Add Court Case

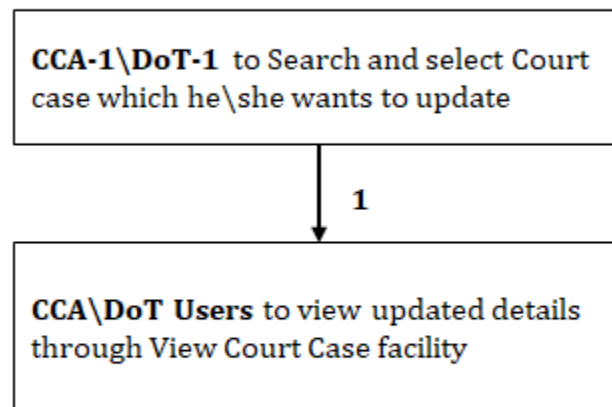
Add Court Case



Scenario-I : 1

10.2 Update Court Case

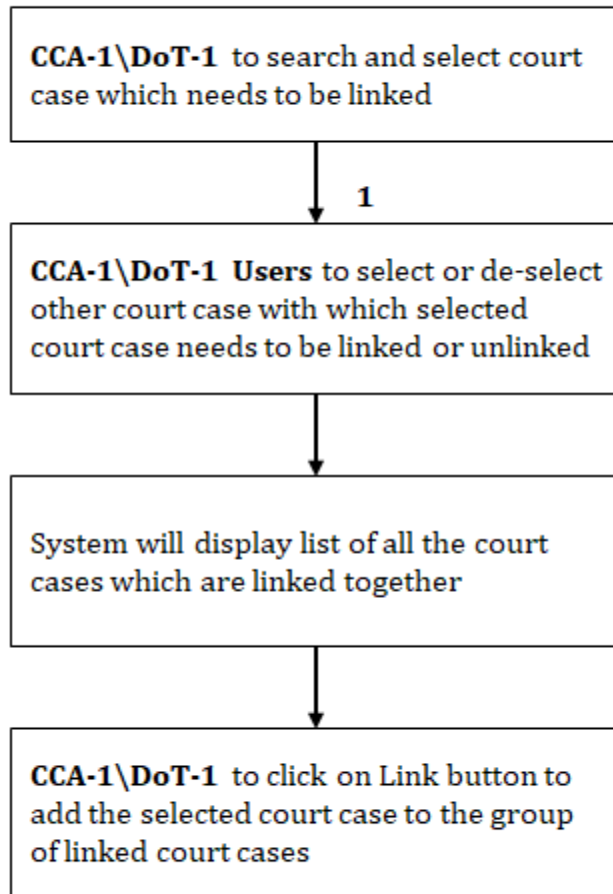
Update Court Case



Scenario-I : 1

10.3 Link Court Cases

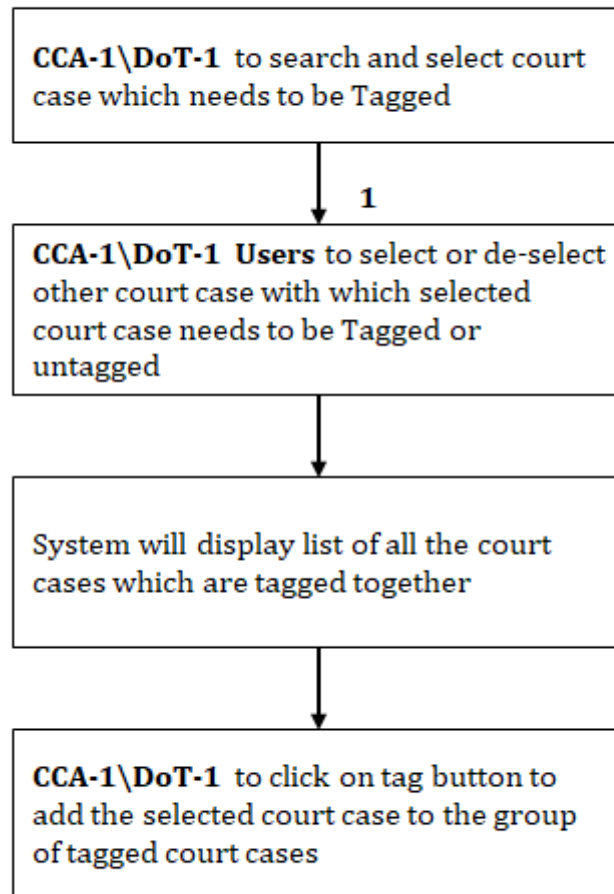
Link Court Cases



Scenario-I : 1

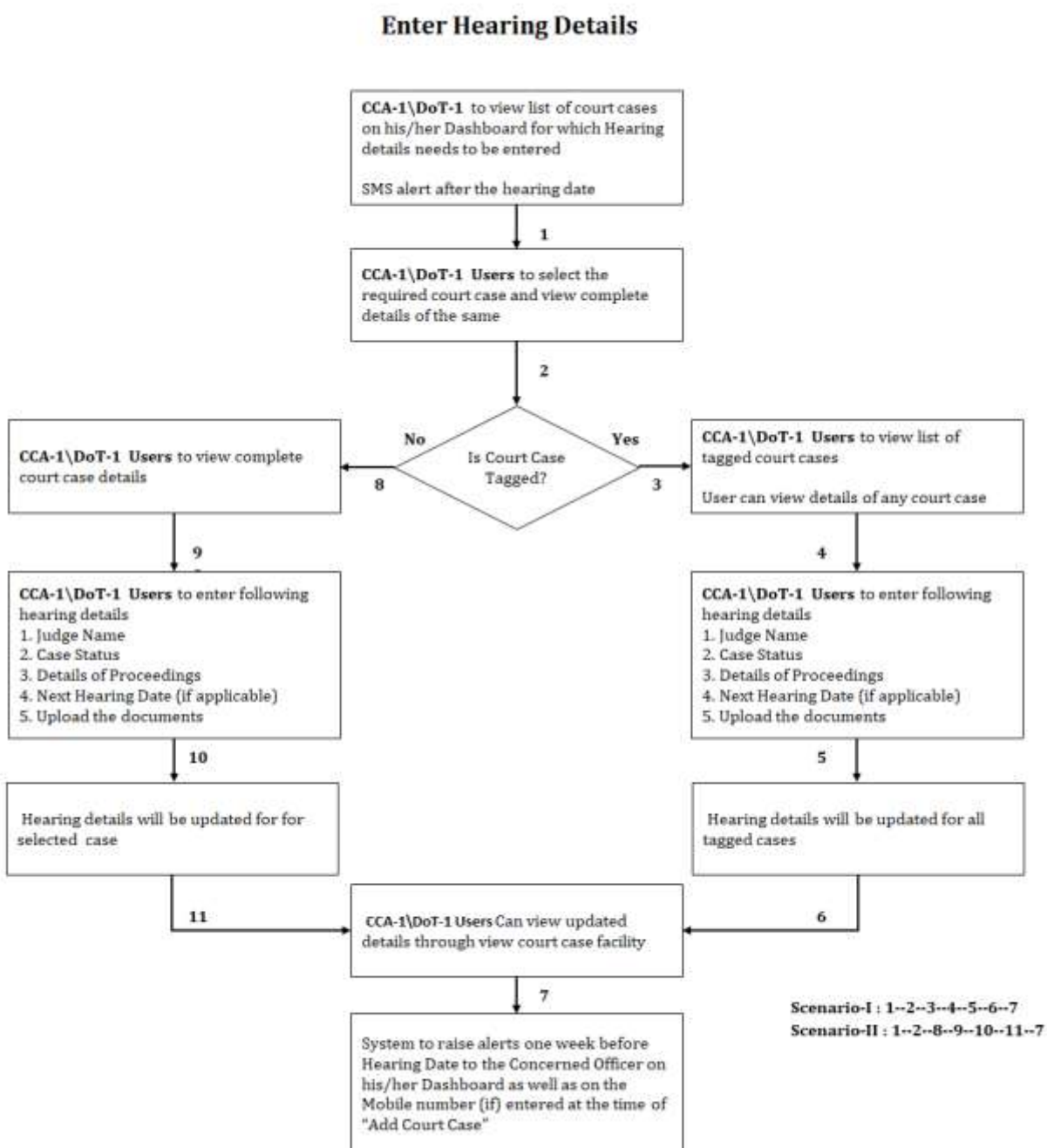
10.4 Tag Court Cases

Tag Court Cases



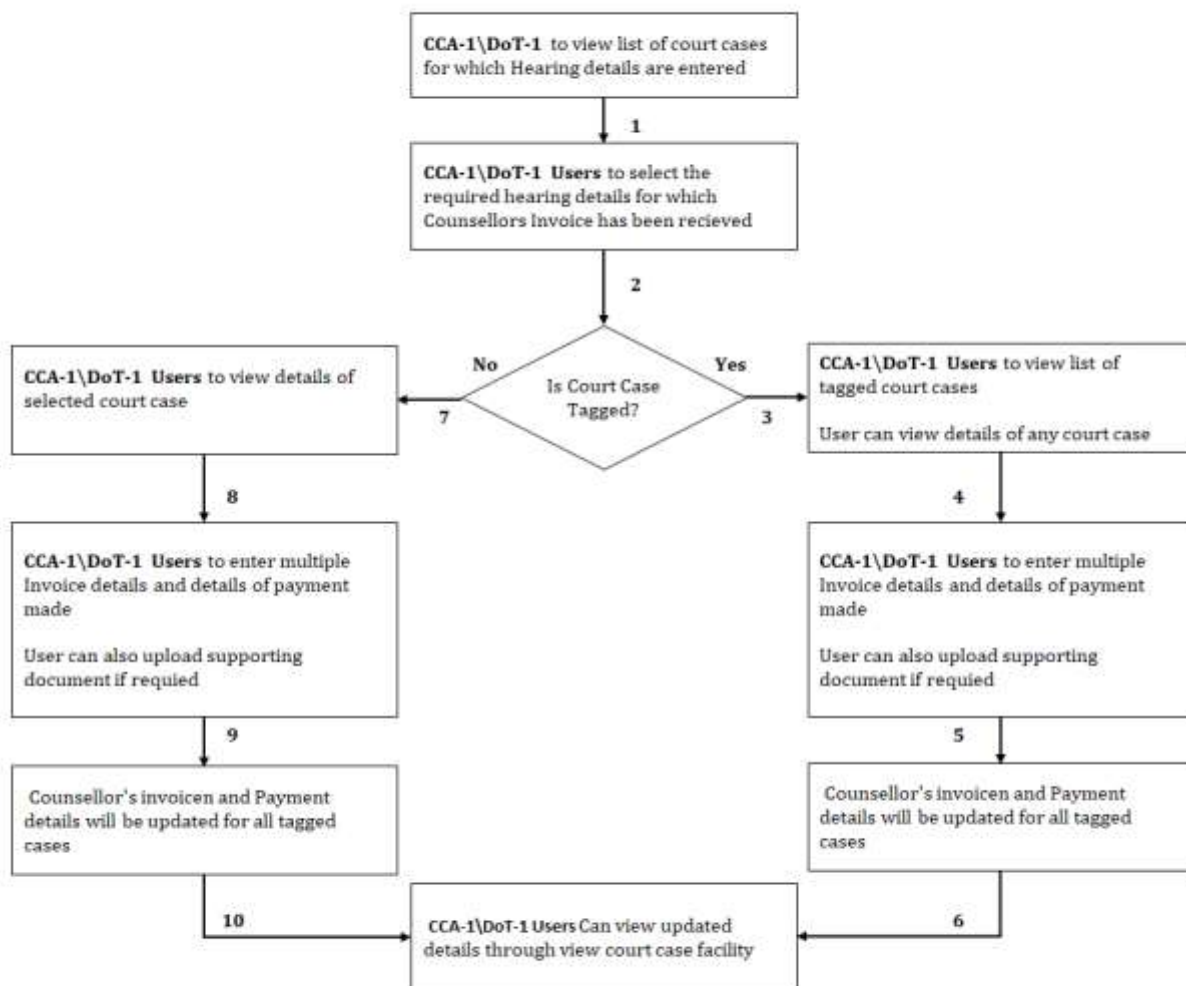
Scenario-I : 1

10.5 Enter Hearing Details



10.6 Enter Counsellors Payment Details

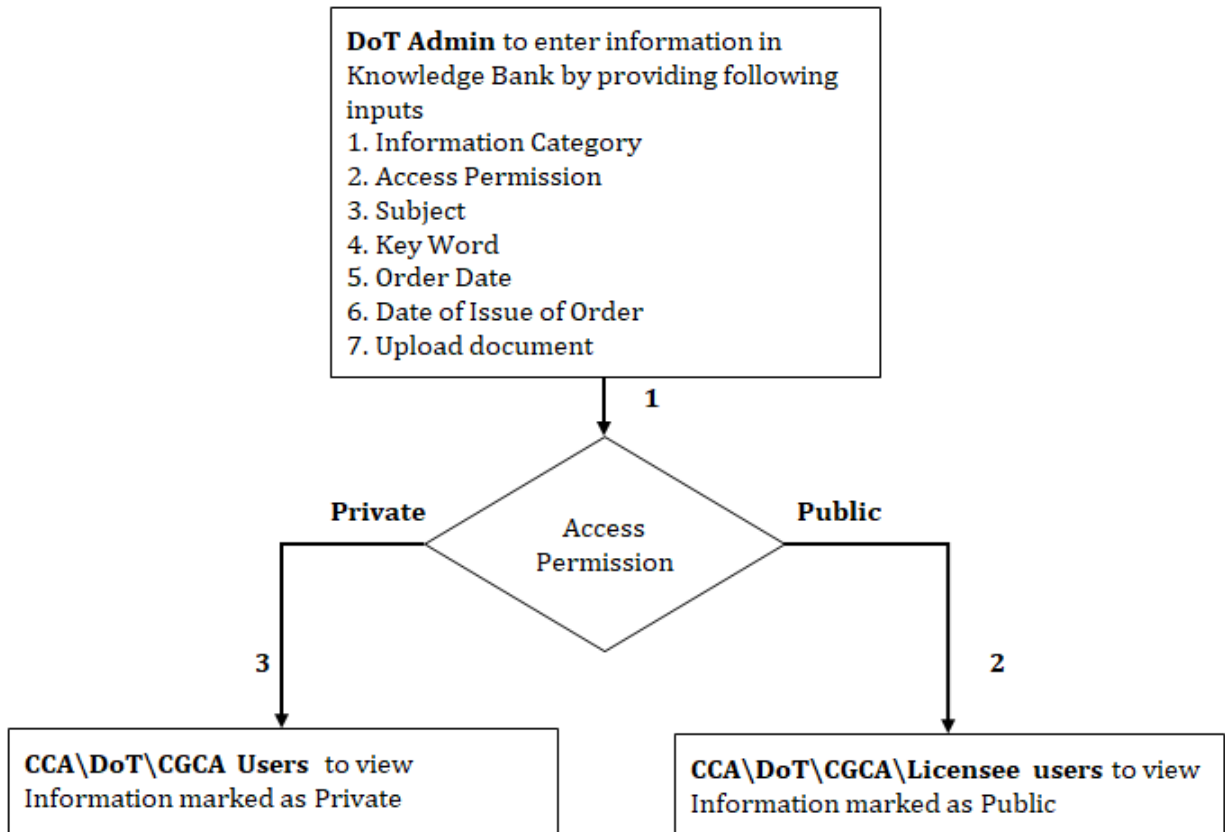
Enter Counsellors Payment Details



Scenario-I : 1--2--3--4--5--6

Scenario-II : 1--2--7--8--9--10

11. Knowledge Bank:

Knowledge Bank

Scenario-I : 1--2

Scenario-II : 1--2--3